

# Recombinant Bovine MTHFD2 Protein (36-350 aa), His-SUMO-tagged

Cat. No. MTHFD2-1868B Lot. No. (See product label)

## SPECIFICATION

**Product Overview** Recombinant Bovine MTHFD2 Protein (36-350 aa) is produced by E. coli expression system. This protein is fused with a 6xHis-SUMO tag at the N-terminal. Research Area: Metabolism. Protein Description: Full Length of Mature Protein.

**Species** Bovine

**Source** E.coli

**ProteinLength** 36-350 aa

**Description** 5,10-methylenetetrahydrofolate + NAD<sup>+</sup> = 5,10-methenyltetrahydrofolate + NADH.  
5,10-methenyltetrahydrofolate + H<sub>2</sub>O = 10-formyltetrahydrofolate.

**Form** Tris-based buffer,50% glycerol

**Molecular Mass** 49.9 kDa

**AA Sequence**

```
EAVVISGRKLAEQIKQEVQRQEVEEWWASGNKRPHLSVVLVGENPASQSYYLNKTRA
AASVGINSETILKPASISEEELLNLINKLNDDNVDGLLVQLPLPEHIDERKVCNAVSP
DKDVDGFHVINVGRMCLDQC SMLPATPWGVWEIIRTGIPTLGKNVVVAGRSKNVG
MPIAMLLHTDGAHERPGGDATVTISHRYTPKEELKKHTALADIVISAAGIPNLITADMIK
EGAAVIDVGINRIQDPITAKPKLVGDVDFEGVKKKAGYITPVPGGVGPMTVAMLMKN
TIIAAKKVLRLEEQEV LKSKELGVASN
```

 Tel: 1-631-559-9269 1-516-512-3133

 Email: [info@creative-biomart.com](mailto:info@creative-biomart.com)  Fax: 1-631-938-8127

 45-1 Ramsey Road, Shirley, NY 11967, USA

<b>Purity</b>	> 90% as determined by SDS-PAGE.
<b>Notes</b>	Repeated freezing and thawing is not recommended. Store working aliquots at 4 centigrade for up to one week.
<b>Storage</b>	The shelf life is related to many factors, storage state, buffer ingredients, storage temperature and the stability of the protein itself. Generally, the shelf life of liquid form is 6 months at -20 centigrade/-80 centigrade. The shelf life of lyophilized form is 12 months at -20 centigrade/-80 centigrade.
<b>Concentration</b>	A hardcopy of COA with reconstitution instruction is sent along with the products.

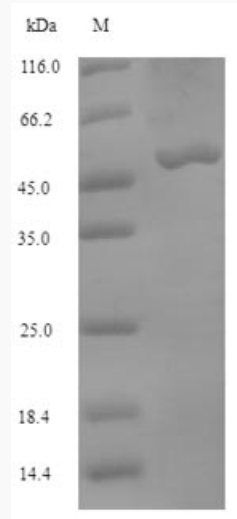
## GENE INFORMATION

<b>Gene Name</b>	MTHFD2 methylenetetrahydrofolate dehydrogenase (NADP+ dependent) 2, methenyltetrahydrofolate cyclohydrolase [ Bos taurus (cattle) ]
<b>Official Symbol</b>	MTHFD2
<b>Synonyms</b>	MTHFD2; NAD-dependent methylenetetrahydrofolate dehydrogenase Methenyltetrahydrofolate cyclohydrolase;
<b>Gene ID</b>	517539
<b>mRNA Refseq</b>	NM_001075755
<b>Protein Refseq</b>	NP_001069223
<b>UniProt ID</b>	Q0P5C2

 Tel: 1-631-559-9269 1-516-512-3133

 Email: [info@creative-biomart.com](mailto:info@creative-biomart.com)  Fax: 1-631-938-8127

 45-1 Ramsey Road, Shirley, NY 11967, USA



(Tris-Glycine gel) Discontinuous SDS-PAGE (reduced) with 5% enrichment gel and 15% separation gel.

 Tel: 1-631-559-9269 1-516-512-3133

 Email: [info@creative-biomart.com](mailto:info@creative-biomart.com)  Fax: 1-631-938-8127

 45-1 Ramsey Road, Shirley, NY 11967, USA