

Recombinant Human MTHFD2 Protein, Myc/DDK-tagged, C13 and N15-labeled

Cat. No. MTHFD2-5322H **Lot. No.** (See product label)

SPECIFICATION

Product Overview	MTHFD2 MS Standard C13 and N15-labeled recombinant protein (NP_006627) with a C-terminal MYC/DDK tag, was expressed in HEK293 cells.
Species	Human
Source	HEK293
ProteinLength	1-350 aa
Description	This gene encodes a nuclear-encoded mitochondrial bifunctional enzyme with methylenetetrahydrofolate dehydrogenase and methenyltetrahydrofolate cyclohydrolase activities. The enzyme functions as a homodimer and is unique in its absolute requirement for magnesium and inorganic phosphate. Formation of the enzyme-magnesium complex allows binding of NAD. Alternative splicing results in two different transcripts, one protein-coding and the other not protein-coding. This gene has a pseudogene on chromosome 7.
Molecular Mass	37.9 kDa
AA Sequence	MAATSLMSALAARLLQPAHSCSLRRLRPFHLAAVRNEAVVISGRKLAQQIKQEVQRQEV EEWVASGNKRPHLSVILVGENPASHSYVLNKTRAAAVVGINSETIMKPASISEEELLN LINKLNDDNDVDGLLVQLPLPEHIDERRICNAVSPDKDVDGFHVINVGRMCLDQYSM LPATPWGVWEIIKRTGIPTLGKNVVVAGRSKNVGMPIAMLLHTDGAHERPGGDATVT ISHRYTPKEQLKKHTILADIVISAAGIPNLITADMIKEGAAVIDVGINRVHDPVTAKPKLV

 Tel: 1-631-559-9269 1-516-512-3133

 Email: info@creative-biomart.com  Fax: 1-631-938-8127

 45-1 Ramsey Road, Shirley, NY 11967, USA

GDVDFEGVRQKAGYITPVPGGVGPMTVAMLMKNTIIAAKKVLRLEEREVLKSKELGV
ATNTRTRPLEQKLISEEDLAANDILDYKDDDDKV

Purity > 80% as determined by SDS-PAGE and Coomassie blue staining

Stability Stable for 3 months from receipt of products under proper storage and handling conditions.

Storage Store at -80 centigrade. Avoid repeated freeze-thaw cycles.

Concentration 50 µg/mL as determined by BCA

Storage Buffer 100 mM glycine, 25 mM Tris-HCl, pH 7.3.

GENE INFORMATION

Gene Name MTHFD2 methylenetetrahydrofolate dehydrogenase (NADP+ dependent) 2, methenyltetrahydrofolate cyclohydrolase [Homo sapiens (human)]

Official Symbol MTHFD2

Synonyms MTHFD2; methylenetetrahydrofolate dehydrogenase (NADP+ dependent) 2, methenyltetrahydrofolate cyclohydrolase; bifunctional methylenetetrahydrofolate dehydrogenase/cyclohydrolase, mitochondrial; NAD-dependent methylene tetrahydrofolate dehydrogenase cyclohydrolase; NMDMC;

Gene ID 10797

mRNA Refseq NM_006636

Protein Refseq NP_006627

 Tel: 1-631-559-9269 1-516-512-3133

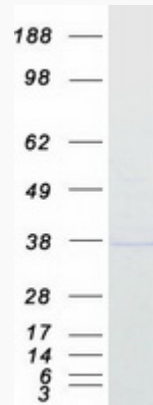
 Email: info@creative-biomart.com  Fax: 1-631-938-8127

 45-1 Ramsey Road, Shirley, NY 11967, USA

MIM 604887

UniProt ID P13995

SDS-PAGE



 Tel: 1-631-559-9269 1-516-512-3133

 Email: info@creative-biomart.com  Fax: 1-631-938-8127

 45-1 Ramsey Road, Shirley, NY 11967, USA