

Recombinant Human MTHFD2L Protein, Myc/DDK-tagged, C13 and N15-labeled

Cat. No. MTHFD2L-6710H **Lot. No.** (See product label)

SPECIFICATION

Product Overview	MTHFD2L MS Standard C13 and N15-labeled recombinant protein (NP_001138450) with a C-terminal MYC/DDK tag, was expressed in HEK293 cells.
Species	Human
Source	HEK293
Description	MTHFD2L (Methylenetetrahydrofolate Dehydrogenase (NADP+ Dependent) 2 Like) is a Protein Coding gene. Diseases associated with MTHFD2L include Cutis Laxa, Autosomal Dominant 3 and Cutis Laxa, Autosomal Dominant 1. Among its related pathways are One carbon pool by folate and Metabolism of water-soluble vitamins and cofactors. Gene Ontology (GO) annotations related to this gene include formate-tetrahydrofolate ligase activity and methylenetetrahydrofolate dehydrogenase (NADP+) activity. An important paralog of this gene is MTHFD2.
Molecular Mass	37.1 kDa
AA Sequence	MTVPVIRGFSLLRGRLLGRAPALGRSTAPSVRAPGEPGSAFRGFRSSGVRHEAIIISGT EMAKHIQKEIQRGVESWVSLGNRRPHLSIILVGDNPASHTYVRNKIRAASAVGICSELI LKP KDVSQEELLDVTDQLNMDPRVSGILVQLPLPDHVDERTICNGIAPEKDVDGFHII NIGRLCLDQHSLIPATASAVWEIIRKRTGIQTFGKNVVVAGRSKNVGMPIAMLLHTDGE HERPGGDATVTIAHRYTPKEQLKIHTQLADIIIVAAGIPKLITSDMVKEGAAVIDVGINY VHDPVTGKTKLVGDVDFEAVKKKAGFITPVPGGVGPMTVAMLLKNTLLAAKKIYTRT

 Tel: 1-631-559-9269 1-516-512-3133

 Email: info@creative-biomart.com  Fax: 1-631-938-8127

 45-1 Ramsey Road, Shirley, NY 11967, USA



RPLEQKLISEEDLAANDILDYKDDDDKV

Purity > 80% as determined by SDS-PAGE and Coomassie blue staining

Stability Stable for 3 months from receipt of products under proper storage and handling conditions.

Storage Store at -80 centigrade. Avoid repeated freeze-thaw cycles.

Concentration 50 µg/mL as determined by BCA

Storage Buffer 100 mM glycine, 25 mM Tris-HCl, pH 7.3.

GENE INFORMATION

Gene Name MTHFD2L methylenetetrahydrofolate dehydrogenase (NADP+ dependent) 2 like [Homo sapiens (human)]

Official Symbol MTHFD2L

Synonyms MTHFD2L; methylenetetrahydrofolate dehydrogenase (NADP+ dependent) 2-like; probable bifunctional methylenetetrahydrofolate dehydrogenase/cyclohydrolase 2; MGC72244; MTHFD2-like; NADP-dependent methylenetetrahydrofolate dehydrogenase 2-like protein; FLJ13105; MGC45532;

Gene ID 441024

mRNA Refseq NM_001144978

Protein Refseq NP_001138450

Tel: 1-631-559-9269 1-516-512-3133

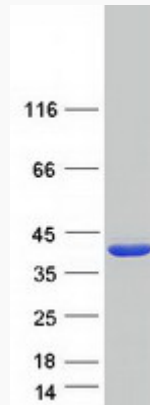
Email: info@creative-biomart.com Fax: 1-631-938-8127

45-1 Ramsey Road, Shirley, NY 11967, USA

MIM 614047

UniProt ID Q9H903

SDS-PAGE



 Tel: 1-631-559-9269 1-516-512-3133

 Email: info@creative-biomart.com  Fax: 1-631-938-8127

 45-1 Ramsey Road, Shirley, NY 11967, USA