

Recombinant Human MTM1 Protein (Met1-Phe603), N-His tagged, Animal-free, Carrier-free

Cat. No. MTM1-232H Lot. No. (See product label)

SPECIFICATION

Product Overview	Recombinant Human MTM1 Protein (Met1-Phe603) with N-His tag was expressed in E. coli and Animal-free as well as Carrier-free.
Species	Human
Source	E.coli
ProteinLength	Met1-Phe603
Description	<p>Myotubularin is a protein that plays a crucial role in cellular processes and is primarily associated with a rare genetic disorder called myotubular myopathy (MTM). This disorder primarily affects skeletal muscles and is characterized by severe muscle weakness and impaired motor function. Myotubularin is an enzyme that regulates the levels of a lipid molecule called phosphatidylinositol 3-phosphate (PI3P) within cells. PI3P is involved in various cellular functions, including membrane trafficking and signaling pathways. Mutations in the gene encoding myotubularin lead to a deficiency or loss of its enzymatic activity, disrupting PI3P metabolism and causing the development of MTM.</p>
Form	Lyophilized
Molecular Mass	<p>The protein has a calculated MW of 70.75 kDa.</p> <p>The protein migrates as 60 kDa under reducing condition (SDS-PAGE analysis).</p>

 Tel: 1-631-559-9269 1-516-512-3133

 Email: info@creative-biomart.com  Fax: 1-631-938-8127

 45-1 Ramsey Road, Shirley, NY 11967, USA

Endotoxin	< 1 EU/μg of the protein by the LAL method.
Purity	>95% as determined by SDS-PAGE analysis.
Storage	This product is stable after storage at: -20 centigrade for 12 months in lyophilized state from date of receipt. -20 or -80 centigrade for 1 month under sterile conditions after reconstitution. Avoid repeated freeze/thaw cycles.
Reconstitution	It is recommended to reconstitute the lyophilized protein in sterile H ₂ O to a concentration not less than 200 μg/mL and incubate the stock solution for at least 20 min to ensure sufficient re-dissolved.
Shipping	The product is shipped with polar packs. Upon receipt, store it immediately at -20 centigrade or lower for long term storage.

GENE INFORMATION

Gene Name	MTM1 myotubularin 1 [Homo sapiens (human)]
Official Symbol	MTM1
Synonyms	MTM1; myotubularin 1; myotubular myopathy 1; myotubularin; CNM; MTMX; XLMTM;
Gene ID	4534
mRNA Refseq	NM_000252
Protein Refseq	NP_000243
MIM	300415

 Tel: 1-631-559-9269 1-516-512-3133

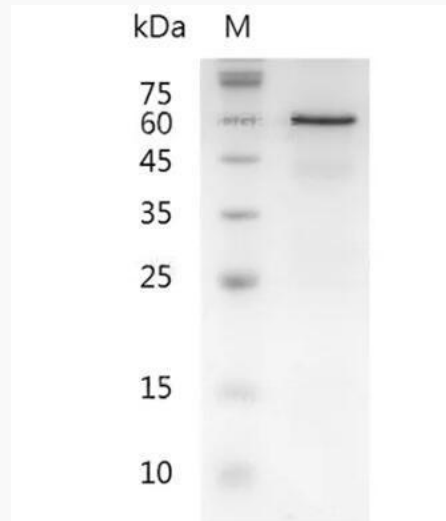
 Email: info@creative-biomart.com  Fax: 1-631-938-8127

 45-1 Ramsey Road, Shirley, NY 11967, USA

UniProt ID

Q13496

**SDS-PAGE analysis
of recombinant
human MTM1.**



 Tel: 1-631-559-9269 1-516-512-3133

 Email: info@creative-biomart.com  Fax: 1-631-938-8127

 45-1 Ramsey Road, Shirley, NY 11967, USA