

## Recombinant Human MTM1 Protein, GST-tagged

Cat. No. MTM1-5709H Lot. No. (See product label)

### SPECIFICATION

<b>Product Overview</b>	Human MTM1 full-length ORF ( AAH30779.1, 1 a.a. - 603 a.a.) recombinant protein with GST-tag at N-terminal.
<b>Species</b>	Human
<b>Source</b>	Wheat Germ
<b>Description</b>	This gene encodes a dual-specificity phosphatase that acts on both phosphotyrosine and phosphoserine. It is required for muscle cell differentiation and mutations in this gene have been identified as being responsible for X-linked myotubular myopathy. [provided by RefSeq]
<b>Molecular Mass</b>	96.3 kDa
<b>AA Sequence</b>	MASASTSKYNSHSLLENESIKRTSRDGVNRDLTEAVPRLPGETLITDKEVIYICPFNGPI KGRVYITNYRLYLRSLETDSSLILDVPLGVISRIEKMGGATSRGENSYGLDITCKDMR NLRFALKQEGHSRRDMFEILTRYAFPLAHSPLFAFLNEEKFNVDGWTVYNPVEEYR RQGLPNHHWRITFINKCYELCDTYPALLVVPYRASDDDLRRVATFRSRNRIPVLSWI HPENKTVIVRCSQPLVGMMSGKRNKDKDEKYLDVIRETNKQISKLTIYDARPSVNAVAN KATGGGYESDDAYHNAELFFLDIHNIHVMRESLKKVKDIVYPNVEESHWLSSLESTH WLEHIKLVLTGAIQVADKVSSGKSSVLVHCSDGWDRTAQLTSLAMLMLDSFYRSIEG FEILVQKKWISFGHKFASRIGHGDKNHTDADRSPIFLQFIDCVWQMSKQFPTAFEFN EQFLIIILDHLYSCRFGTFLNCESARERQKV TERTVSLWLSLINSNKEKFKNPFYTKEI NRVLYPVASMRHLELWVNYIRWNPRIKQQQPNPVEQRYMELLALRDEYIKRLEEL

 Tel: 1-631-559-9269 1-516-512-3133

 Email: [info@creative-biomart.com](mailto:info@creative-biomart.com)  Fax: 1-631-938-8127

 45-1 Ramsey Road, Shirley, NY 11967, USA

QLANSAKLSDPPTSPSSPSQMMPHVQTHF

**Applications**

Enzyme-linked Immunoabsorbent Assay  
 Western Blot (Recombinant protein)  
 Antibody Production  
 Protein Array

**Notes**

Best use within three months from the date of receipt of this protein.

**Storage**

Store at -80 centigrade. Aliquot to avoid repeated freezing and thawing.

**Storage Buffer**

50 mM Tris-HCl, 10 mM reduced Glutathione, pH=8.0 in the elution buffer.

**GENE INFORMATION**

**Gene Name**

[MTM1 myotubularin 1 \[ Homo sapiens \]](#)

**Official Symbol**

[MTM1](#)

**Synonyms**

MTM1; myotubularin 1; myotubular myopathy 1; myotubularin; CNM; MTMX; XLMTM;

**Gene ID**

[4534](#)

**mRNA Refseq**

[NM\\_000252](#)

**Protein Refseq**

[NP\\_000243](#)

**MIM**

[300415](#)

**UniProt ID**

[Q13496](#)

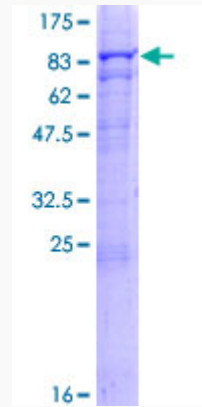
 Tel: 1-631-559-9269 1-516-512-3133

 Email: [info@creative-biomart.com](mailto:info@creative-biomart.com)  Fax: 1-631-938-8127

 45-1 Ramsey Road, Shirley, NY 11967, USA

**Quality Control**

**Testing:**



12.5% SDS-PAGE Stained with Coomassie Blue.

 Tel: 1-631-559-9269 1-516-512-3133

 Email: [info@creative-biomart.com](mailto:info@creative-biomart.com)  Fax: 1-631-938-8127

 45-1 Ramsey Road, Shirley, NY 11967, USA