

Recombinant Human MTMR12 Protein, Myc/DDK-tagged, C13 and N15-labeled

Cat. No. MTMR12-4901H **Lot. No.** (See product label)

SPECIFICATION

Product Overview	MTMR12 MS Standard C13 and N15-labeled recombinant protein (NP_001035536) with a C-terminal MYC/DDK tag, was expressed in HEK293 cells.
Species	Human
Source	HEK293
Description	Phosphatidylinositide 3-kinase-derived membrane-anchored phosphatidylinositides, such as phosphatidylinositol 3-phosphate (PtdIns(3)P), regulate diverse cellular processes. The protein encoded by this gene functions as an adaptor subunit in a complex with an active PtdIns(3)P 3-phosphatase. Alternatively spliced transcript variants encoding different isoforms have been found for this gene.
Molecular Mass	86 kDa
AA Sequence	MLGKGVVGGGGGKAPKPSFVSYVRPEEIHNEKEVTEKEVTLHLLPGEQLLCEAS TVLKYYQEDSCQHGVYGRVCTDFKIAFLGDDESALDNDQFKNKVI GENDITLHC VDQIYGVFDEKKTFLGQLKKYPEKLIHCKDLRVFQFCLRYTKEEEVKRIVSGIIHHT QAPKLLKRLFLFSYATAAQNNTVTPKNHTVMFDTLKDWCWELERTKGNMKYKAVS VNEGKVCERLPAYFVPTPLPEENVQRFQGHGIPWCWSCHNGSALLKMSALPKE QDDGILQIQKSFLDGIYKTIHRPPYEIVKTEDLSSNFLSLQEIQTAYSFKQLFLIDNST EFWDTDIKWFSLLESSSWLDIIRCLKKAIEITECMEAQNMNVLLLEENASDLCLISS LVQLMMDPHCRTRIGFQSLIQKEWVMGGHCFLDRCNHLRQNDKEEVPVFLFLDCV

 Tel: 1-631-559-9269 1-516-512-3133

 Email: info@creative-biomart.com  Fax: 1-631-938-8127

 45-1 Ramsey Road, Shirley, NY 11967, USA

WQLVHQHPPAFEFTEYTLTVLSDSLYIPIFSTFFFNSPHQKDTNMGREGQDTQSKPL
 NLLTVWDWSVQFEPKAQTLLKNPLYVEKPKLDKGQRKGMRFKHQRQLSLPLTQSK
 SSPKRGFFREETDHLIKNLLGKRISKLINSSDELQDNFREFYDSWHSKSTDYHGLLLP
 HIEGPEIKVWAQRYLRWIPEAQILGGGQVATLSKLLEMMEEVQSLQEKIDERHHSQQ
 APQAEAPCLLRNSARLSSLFPFALLQRHSSKPVLP TSGWKALGDEDDLAKREDEFV
 DLGDVTRTRPLEQKLISEEDLAANDILDYKDDDDKV

Purity > 80% as determined by SDS-PAGE and Coomassie blue staining

Stability Stable for 3 months from receipt of products under proper storage and handling conditions.

Storage Store at -80 centigrade. Avoid repeated freeze-thaw cycles.

Concentration 50 µg/mL as determined by BCA

Storage Buffer 100 mM glycine, 25 mM Tris-HCl, pH 7.3.

GENE INFORMATION

Gene Name [MTMR12 myotubularin related protein 12 \[Homo sapiens \(human\) \]](#)

Official Symbol [MTMR12](#)

Synonyms MTMR12; myotubularin related protein 12; phosphatidylinositol 3 phosphate associated protein, PIP3AP; myotubularin-related protein 12; 3 PAP; 3PAP; FLJ20476; KIAA1682; 3-phosphatase adapter protein; 3-phosphatase adapter subunit; phosphatidylinositol-3-phosphate associated protein; phosphatidylinositol-3 phosphate 3-phosphatase adapter subunit; phosphatidylinositol-3 phosphate 3-phosphatase adaptor subunit; 3-PAP; PIP3AP;

 Tel: 1-631-559-9269 1-516-512-3133

 Email: info@creative-biomart.com  Fax: 1-631-938-8127

 45-1 Ramsey Road, Shirley, NY 11967, USA

Gene ID 54545

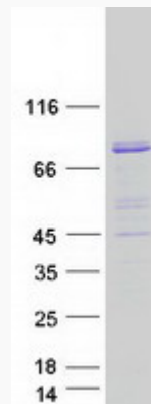
mRNA Refseq NM_001040446


Protein Refseq NP_001035536

MIM 606501

UniProt ID Q9C011

SDS-PAGE



 Tel: 1-631-559-9269 1-516-512-3133

 Email: info@creative-biomart.com  Fax: 1-631-938-8127

 45-1 Ramsey Road, Shirley, NY 11967, USA