

Recombinant Human MTMR3 Protein, GST-tagged

Cat. No. MTMR3-5720H **Lot. No.** (See product label)

SPECIFICATION

Product Overview	Human MTMR3 partial ORF (NP_066576.1, 579 a.a. - 674 a.a.) recombinant protein with GST-tag at N-terminal.
Species	Human
Source	Wheat Germ
Description	<p>This gene encodes a member of the myotubularin dual specificity protein phosphatase gene family. The encoded protein is structurally similar to myotubularin but in addition contains a FYVE domain and an N-terminal PH-GRAM domain. The protein can self-associate and also form heteromers with another myotubularin related protein. The protein binds to phosphoinositide lipids through the PH-GRAM domain, and can hydrolyze phosphatidylinositol(3)-phosphate and phosphatidylinositol(3,5)-biphosphate in vitro. The encoded protein has been observed to have a perinuclear, possibly membrane-bound, distribution in cells, but it has also been found free in the cytoplasm. Multiple transcript variants encoding different isoforms have been found for this gene. [provided by RefSeq]</p>
Molecular Mass	36.3 kDa
AA Sequence	CPSPTTPVDDSCAPYPAPGTSPDDPPLSRLPKTRSYDNLTTACDNTVPLASRRCS PSLNEKWQEHRRSLELSSLAGPGEDPLSADSLGKPTRVPG
Applications	Enzyme-linked Immunoabsorbent Assay Western Blot (Recombinant protein)

 Tel: 1-631-559-9269 1-516-512-3133

 Email: info@creative-biomart.com  Fax: 1-631-938-8127

 45-1 Ramsey Road, Shirley, NY 11967, USA

	Antibody Production Protein Array
Notes	Best use within three months from the date of receipt of this protein.
Storage	Store at -80 centigrade. Aliquot to avoid repeated freezing and thawing.
Storage Buffer	50 mM Tris-HCl, 10 mM reduced Glutathione, pH=8.0 in the elution buffer.
GENE INFORMATION	
Gene Name	MTMR3 myotubularin related protein 3 [Homo sapiens]
Official Symbol	MTMR3
Synonyms	MTMR3; myotubularin related protein 3; myotubularin-related protein 3; FYVE DSP1; KIAA0371; ZFYVE10; zinc finger, FYVE domain containing 10; zinc finger FYVE domain-containing protein 10; FYVE domain-containing dual specificity protein phosphatase 1; FYVE (Fab1 YGLO23 Vsp27 EEA1 domain) dual-specificity protein phosphatase; FYVE-DSP1; FLJ32333;
Gene ID	8897
mRNA Refseq	NM_021090
Protein Refseq	NP_066576
MIM	603558
UniProt ID	Q13615

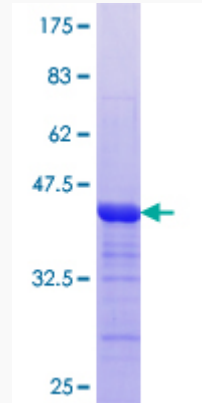
 Tel: 1-631-559-9269 1-516-512-3133

 Email: info@creative-biomart.com  Fax: 1-631-938-8127

 45-1 Ramsey Road, Shirley, NY 11967, USA

Quality Control

Testing:



12.5% SDS-PAGE Stained with Coomassie Blue.

 Tel: 1-631-559-9269 1-516-512-3133

 Email: info@creative-biomart.com  Fax: 1-631-938-8127

 45-1 Ramsey Road, Shirley, NY 11967, USA