

Recombinant Full Length Human MTNR1A Protein, C-Flag-tagged

Cat. No. MTNR1A-1482HFL **Lot. No.** (See product label)

SPECIFICATION

Product Overview	Recombinant Full Length Human MTNR1A Protein, fused to Flag-tag at C-terminus, was expressed in Mammalian cells.
Species	Human
Source	Mammalian Cells
Description	This gene encodes one of two high affinity forms of a receptor for melatonin, the primary hormone secreted by the pineal gland. This receptor is a G-protein coupled, 7-transmembrane receptor that is responsible for melatonin effects on mammalian circadian rhythm and reproductive alterations affected by day length. The receptor is an integral membrane protein that is readily detectable and localized to two specific regions of the brain. The hypothalamic suprachiasmatic nucleus appears to be involved in circadian rhythm while the hypophysial pars tuberalis may be responsible for the reproductive effects of melatonin.
Form	25 mM Tris HCl, pH 7.3, 100 mM glycine, 10% glycerol.
Molecular Mass	39.2 kDa
AA Sequence	MQGNGSALPNASQPVLRGDGARPSWLASALACVLIFTIVVDILGNLLVILSVYRNKKL RNAGNIFVVSLA VADLVVAIYPYPLVLMSIFNNGWNLGYLHCQVSGFLMGLSVIGSIF NITGIAINRYCYICHSLKYDKLYS SKNSLCYVLLIWLLTAAVLPNLRAGTLQYDPRIYS CTFAQSVSSAYTIAVVVFHFLVPMIIVIFCYLRI WILVLQVRQRVKPDRKPKLKPQDFR

 Tel: 1-631-559-9269 1-516-512-3133

 Email: info@creative-biomart.com  Fax: 1-631-938-8127

 45-1 Ramsey Road, Shirley, NY 11967, USA

NFVTMFVVFVLFAICWAPLNFIFGLAVASDPASMVPRIPWLFVAS YYMAYFNSCLNAI
 IYGLLNQNFRRKEYRRIIVSLCTARVFFVDSSNDVADRVKWKPSPLMTNNNVVKVDSV
 TRTRPLEQKLISEEDLAANDILDYKDDDDKV

Purity > 80% as determined by SDS-PAGE and Coomassie blue staining.

Stability Stable for 12 months from the date of receipt of the product under proper storage and handling conditions. Avoid repeated freeze-thaw cycles.

Storage Store at -80 centigrade.

Concentration >50 ug/mL as determined by microplate BCA method.

Preparation Recombinant protein was captured through anti-DDK affinity column followed by conventional chromatography steps.

Protein Families Druggable Genome, GPCR, Transmembrane

Protein Pathways Neuroactive ligand-receptor interaction

Full Length Full L.

GENE INFORMATION

Gene Name [MTNR1A melatonin receptor 1A \[Homo sapiens \(human\) \]](#)

Official Symbol [MTNR1A](#)

Synonyms MT1; MEL-1A-R

Gene ID [4543](#)

 Tel: 1-631-559-9269 1-516-512-3133

 Email: info@creative-biomart.com  Fax: 1-631-938-8127

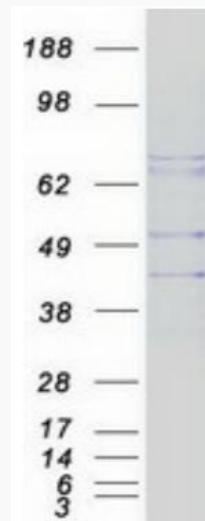
 45-1 Ramsey Road, Shirley, NY 11967, USA

mRNA Refseq [NM_005958.4](#)

Protein Refseq [NP_005949.1](#)

MIM [600665](#)

UniProt ID [P48039](#)



Coomassie blue staining of purified MTNR1A protein.

 Tel: 1-631-559-9269 1-516-512-3133

 Email: info@creative-biomart.com  Fax: 1-631-938-8127

 45-1 Ramsey Road, Shirley, NY 11967, USA