

## Recombinant Human MTPN protein

Cat. No. MTPN-2077H Lot. No. (See product label)

### SPECIFICATION

<b>Product Overview</b>	Recombinant Human MTPNprotein(P58546)(118aa) was expressed in E. coli.
<b>Species</b>	Human
<b>Source</b>	E.coli
<b>ProteinLength</b>	118aa
<b>Tag</b>	Non
<b>Form</b>	20mM Tris.Cl, 50mM NaCl, 50% Glycerol, pH8.0.
<b>Molecular Mass</b>	12.9kDa
<b>Storage</b>	Store at -80°C and avoid repeated freeze-thaw cycles.
<b>Reconstitution</b>	It is recommended that sterile water be added to the vial to prepare a stock solution of 0.2 ug/ul. Centrifuge the vial at 4°C before opening to recover the entire contents.

### GENE INFORMATION

<b>Gene Name</b>	MTPN myotrophin [ Homo sapiens ]
<b>Official Symbol</b>	MTPN

 Tel: 1-631-559-9269 1-516-512-3133

 Email: [info@creative-biomart.com](mailto:info@creative-biomart.com)  Fax: 1-631-938-8127

 45-1 Ramsey Road, Shirley, NY 11967, USA

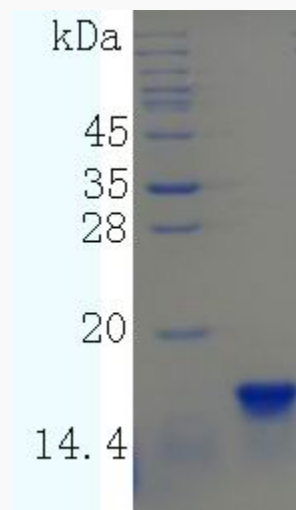
**Synonyms** MTPN; myotrophin; GCDP; granule cell differentiation protein; MYOTROPHIN; V 1;

**Gene ID** 94351

**MIM** 606484

**UniProt ID** P58546

**SDS-PAGE**



 Tel: 1-631-559-9269 1-516-512-3133

 Email: [info@creative-biomart.com](mailto:info@creative-biomart.com)  Fax: 1-631-938-8127

 45-1 Ramsey Road, Shirley, NY 11967, USA