

# Recombinant Human MTPN Protein, Myc/DDK-tagged, C13 and N15-labeled

**Cat. No.** MTPN-2319H    **Lot. No.** (See product label)

## SPECIFICATION

<b>Product Overview</b>	MTPN MS Standard C13 and N15-labeled recombinant protein (NP_665807) with a C-terminal MYC/DDK tag, was expressed in HEK293 cells.
<b>Species</b>	Human
<b>Source</b>	HEK293
<b>Description</b>	The transcript produced from this gene is bi-cistronic and can encode both myotrophin and leucine zipper protein 6. The myotrophin protein is associated with cardiac hypertrophy, where it is involved in the conversion of NFkappa B p50-p65 heterodimers to p50-p50 and p65-p65 homodimers. This protein also has a potential function in cerebellar morphogenesis, and it may be involved in the differentiation of cerebellar neurons, particularly of granule cells. A cryptic ORF at the 3' end of this transcript uses a novel internal ribosome entry site and a non-AUG translation initiation codon to produce leucine zipper protein 6, a 6.4 kDa tumor antigen that is associated with myeloproliferative disease.
<b>Molecular Mass</b>	12.9 kDa
<b>AA Sequence</b>	MCDKEFMWALKNGDLDEVKDYVAKGEDVNRTLEGGRKPLHYAADCGQLEILEFLL KGADINAPDKHHITPLLSAVYEGHVSCVKLLLSKGADKTVKGPDGLTAFEATDNQAIK ALLQSGPTRTRPLEQKLISEEDLAANDILDYKDDDDKV
<b>Purity</b>	> 80% as determined by SDS-PAGE and Coomassie blue staining

 Tel: 1-631-559-9269    1-516-512-3133

 Email: [info@creative-biomart.com](mailto:info@creative-biomart.com)     Fax: 1-631-938-8127

 45-1 Ramsey Road, Shirley, NY 11967, USA

<b>Stability</b>	Stable for 3 months from receipt of products under proper storage and handling conditions.
<b>Storage</b>	Store at -80 centigrade. Avoid repeated freeze-thaw cycles.
<b>Concentration</b>	50 µg/mL as determined by BCA
<b>Storage Buffer</b>	100 mM glycine, 25 mM Tris-HCl, pH 7.3.

## GENE INFORMATION

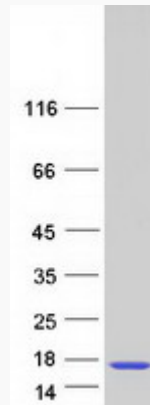
<b>Gene Name</b>	MTPN myotrophin [ <i>Homo sapiens</i> (human) ]
<b>Official Symbol</b>	MTPN
<b>Synonyms</b>	MTPN; myotrophin; GCDP; granule cell differentiation protein; MYOTROPHIN; V 1;
<b>Gene ID</b>	136319
<b>mRNA Refseq</b>	NM_145808
<b>Protein Refseq</b>	NP_665807
<b>MIM</b>	606484
<b>UniProt ID</b>	P58546

 Tel: 1-631-559-9269 1-516-512-3133

 Email: [info@creative-biomart.com](mailto:info@creative-biomart.com)  Fax: 1-631-938-8127

 45-1 Ramsey Road, Shirley, NY 11967, USA

**SDS-PAGE**



 Tel: 1-631-559-9269 1-516-512-3133

 Email: [info@creative-biomart.com](mailto:info@creative-biomart.com)  Fax: 1-631-938-8127

 45-1 Ramsey Road, Shirley, NY 11967, USA