

## Recombinant Human MTR Protein, GST-tagged

**Cat. No.** MTR-5731H    **Lot. No.** (See product label)

### SPECIFICATION

<b>Product Overview</b>	Human MTR partial ORF ( NP_000245, 1094 a.a. - 1203 a.a.) recombinant protein with GST-tag at N-terminal.
<b>Species</b>	Human
<b>Source</b>	Wheat Germ
<b>Description</b>	MTR encodes the enzyme 5-methyltetrahydrofolate-homocysteine methyltransferase. This enzyme, also known as cobalamin-dependent methionine synthase, catalyzes the final step in methionine biosynthesis. Mutations in MTR have been identified as the underlying cause of methylcobalamin deficiency complementation group G. [provided by RefSeq]
<b>Molecular Mass</b>	37.84 kDa
<b>AA Sequence</b>	RDYLGLFAVACFGVEELSKAYEDDGDDYSSIMVKALGDRLAEAF AEELHERV RREL WAYCGSEQLDVADLRRLRYK GIRPAPGYPSQPDHTEKLT MWRLADIEQSTGIRL
<b>Applications</b>	Enzyme-linked Immunoabsorbent Assay Western Blot (Recombinant protein) Antibody Production Protein Array
<b>Notes</b>	Best use within three months from the date of receipt of this protein.

 Tel: 1-631-559-9269    1-516-512-3133

 Email: [info@creative-biomart.com](mailto:info@creative-biomart.com)     Fax: 1-631-938-8127

 45-1 Ramsey Road, Shirley, NY 11967, USA

**Storage** Store at -80 centigrade. Aliquot to avoid repeated freezing and thawing.

**Storage Buffer** 50 mM Tris-HCl, 10 mM reduced Glutathione, pH=8.0 in the elution buffer.

## GENE INFORMATION

**Gene Name** [MTR 5-methyltetrahydrofolate-homocysteine methyltransferase \[ Homo sapiens \]](#)

**Official Symbol** [MTR](#)

**Synonyms** MTR; 5-methyltetrahydrofolate-homocysteine methyltransferase; methionine synthase; cblG; cobalamin-dependent methionine synthase; vitamin-B12 dependent methionine synthase; 5-methyltetrahydrofolate-homocysteine methyltransferase 1; MS; FLJ33168; FLJ43216; FLJ45386;

**Gene ID** [4548](#)

**mRNA Refseq** [NM\\_000254](#)

**Protein Refseq** [NP\\_000245](#)

**MIM** [156570](#)

**UniProt ID** [Q99707](#)

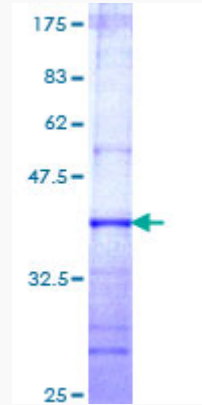
 Tel: 1-631-559-9269 1-516-512-3133

 Email: [info@creative-biomart.com](mailto:info@creative-biomart.com)  Fax: 1-631-938-8127

 45-1 Ramsey Road, Shirley, NY 11967, USA

**Quality Control**

**Testing:**



12.5% SDS-PAGE Stained with Coomassie Blue.

 Tel: 1-631-559-9269 1-516-512-3133

 Email: [info@creative-biomart.com](mailto:info@creative-biomart.com)  Fax: 1-631-938-8127

 45-1 Ramsey Road, Shirley, NY 11967, USA