

Active Recombinant Human MUC1 Protein, Fc-tagged, Alexa Fluor® 488 conjugated

Cat. No. MUC1-17H Lot. No. (See product label)

SPECIFICATION

Product Overview	Recombinant human Alexa Fluor® 488 conjugated MUC-1 (Ser24-Ser380) protein with human IgG1 (Pro100-Lys330) Fc tag at C-terminus was expressed in human embryonic kidney cell.
Species	Human
Source	HEK293
ProteinLength	24-380 a.a.
Description	<p>This gene encodes a membrane-bound protein that is a member of the mucin family. Mucins are O-glycosylated proteins that play an essential role in forming protective mucous barriers on epithelial surfaces. These proteins also play a role in intracellular signaling. This protein is expressed on the apical surface of epithelial cells that line the mucosal surfaces of many different tissues including lung, breast stomach and pancreas. This protein is proteolytically cleaved into alpha and beta subunits that form a heterodimeric complex. The N-terminal alpha subunit functions in cell-adhesion and the C-terminal beta subunit is involved in cell signaling. Overexpression, aberrant intracellular localization, and changes in glycosylation of this protein have been associated with carcinomas. This gene is known to contain a highly polymorphic variable number tandem repeats (VNTR) domain. Alternate splicing results in multiple transcript variants.</p>

 Tel: 1-631-559-9269 1-516-512-3133

 Email: info@creative-biomart.com  Fax: 1-631-938-8127

 45-1 Ramsey Road, Shirley, NY 11967, USA

Form	<p>Disulfide-linked homodimer</p> <p>Labeled with Alexa Fluor® 488 via amines</p> <p>Excitation Wavelength: 488 nm</p> <p>Emission Wavelength: 515-545 nm</p>
Bio-activity	<p>Measured by flow cytometry for its ability to bind anti-Human MUC-1 Monoclonal Antibody conjugated beads. The concentration of Recombinant human MUC-1 Chimera Alexa Fluor® 488 that produces 50% of the binding response is 5.00-50.0 ng/mL</p>
Molecular Mass	60 kDa
N-terminal Sequence Analysis	Ser24
Endotoxin	<1.0 EU/µg of the protein by the LAL method.
Purity	>95%, by SDS-PAGE visualized with Silver Staining and quantitative densitometry by Coomassie® Blue Staining.
Storage	<p>Protect from light. Use a manual defrost freezer and avoid repeated freeze-thaw cycles.</p> <p>6 months from date of receipt, -20 to -70 centigrade as supplied.</p> <p>1 month, 2 to 8 centigrade under sterile conditions after opening.</p> <p>3 months, -20 to -70 centigrade under sterile conditions after opening.</p>
Storage Buffer	Supplied as a 0.2 µm filtered solution in PBS with BSA as a carrier protein.
Conjugation	Alexa Fluor 488

GENE INFORMATION

 Tel: 1-631-559-9269 1-516-512-3133

 Email: info@creative-biomart.com  Fax: 1-631-938-8127

 45-1 Ramsey Road, Shirley, NY 11967, USA

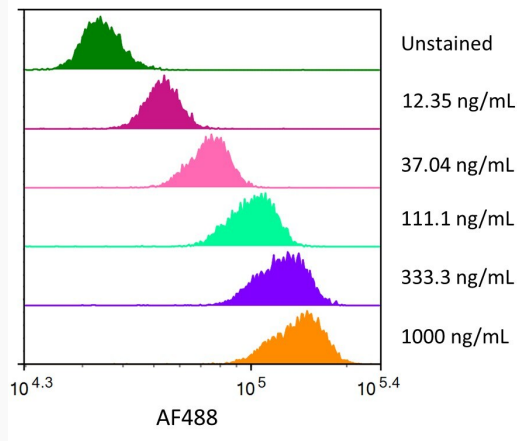
Gene Name	MUC1 mucin 1, cell surface associated [Homo sapiens (human)]
Official Symbol	MUC1
Synonyms	MUC1; mucin 1, cell surface associated; EMA; MCD; PEM; PUM; KL-6; MAM6; MCKD; PEMT; CD227; H23AG; MCKD1; MUC-1; ADMCKD; ADTKD2; Ca15-3; ADMCKD1; CA 15-3; MUC-1/X; MUC1/ZD; MUC-1/SEC; mucin-1; H23 antigen; breast carcinoma-associated antigen DF3; cancer antigen 15-3; carcinoma-associated mucin; episialin; krebs von den Lungen-6; mucin 1, transmembrane; peanut-reactive urinary mucin; polymorphic epithelial mucin; tumor associated epithelial mucin; tumor-associated epithelial membrane antigen
Gene ID	4582
mRNA Refseq	NM_002456
Protein Refseq	NP_002447
MIM	158340
UniProt ID	P15941

 Tel: 1-631-559-9269 1-516-512-3133

 Email: info@creative-biomart.com  Fax: 1-631-938-8127

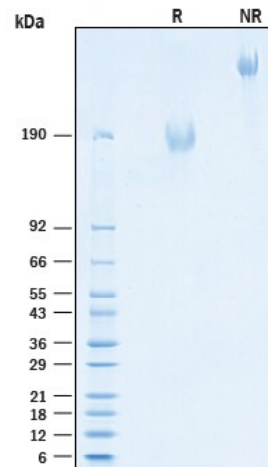
 45-1 Ramsey Road, Shirley, NY 11967, USA

FC



Streptavidin coated beads conjugated to biotinylated anti-Human MUC-1 Monoclonal Antibody were stained with the indicated concentrations of Recombinant Human MUC-1 Fc Chimera Alexa Fluor® 488.

SDS-PAGE



2 µg/lane of Recombinant Human MUC-1 Fc Chimera Alexa Fluor® 488 Protein was resolved with SDS-PAGE under reducing (R) and non-reducing (NR) conditions


Tel: 1-631-559-9269 1-516-512-3133

Email: info@creative-biomart.com Fax: 1-631-938-8127

45-1 Ramsey Road, Shirley, NY 11967, USA



and visualized by Coomassie® Blue staining, showing bands at 157-192 kDa and 310-380 kDa, respectively.

 Tel: 1-631-559-9269 1-516-512-3133

 Email: info@creative-biomart.com  Fax: 1-631-938-8127

 45-1 Ramsey Road, Shirley, NY 11967, USA