

Recombinant Human MUC1 protein(31-150 aa), C-His-tagged

Cat. No. MUC1-2661H Lot. No. (See product label)

SPECIFICATION

| | |
|-------------------------|---|
| Product Overview | Recombinant Human MUC1 protein(P15941)(31-150 aa), fused with C-terminal His tag, was expressed in E. coli. |
| Species | Human |
| Source | E.coli |
| ProteinLength | 31-150 aa |
| Form | 0.15 M Phosphate buffered saline |
| Molecular Mass | 13.5 kDa |
| Storage | Shipped on dry ice. Avoid repeated freeze-thaw cycles. Upon receipt, 2 days when stored at 2 to 8 °C after thawing. Up to 12 months when aliquoted and stored at -20 to -80°C. |
| Reconstitution | It is recommended that sterile water be added to the vial to prepare a stock solution of 0.2 ug/ul. Centrifuge the vial at 4°C before opening to recover the entire contents. |
| AA Sequence | PGGEKETSATQRSSVPSSTEKNAVSMTSSVLSSHSPGSGSSTTQGQDVTLPATEP ASGSAATWGQDVTSPVTRPALGSTTPPAHDVTSAPDNKPAPGSTAPPAHGV TSA PDTRPAPGS |

GENE INFORMATION

 Tel: 1-631-559-9269 1-516-512-3133

 Email: info@creative-biomart.com  Fax: 1-631-938-8127

 45-1 Ramsey Road, Shirley, NY 11967, USA

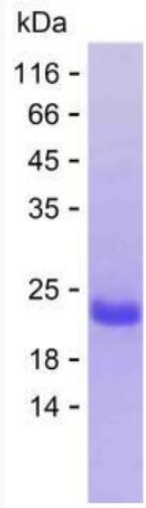
| | |
|------------------------|---|
| Gene Name | MUC1 mucin 1, cell surface associated [Homo sapiens] |
| Official Symbol | MUC1 |
| Synonyms | MUC1; mucin 1, cell surface associated; mucin 1, transmembrane , PUM; mucin-1; CD227; PEM; episialin; DF3 antigen; H23 antigen; krebs von den Lungen-6; mucin 1, transmembrane; tumor-associated mucin; carcinoma-associated mucin; polymorphic epithelial mucin; peanut-reactive urinary mucin; tumor associated epithelial mucin; breast carcinoma-associated antigen DF3; tumor-associated epithelial membrane antigen; EMA; PUM; KL-6; MAM6; PEMT; H23AG; MUC-1; MUC-1/X; MUC1/ZD; MUC-1/SEC; |
| Gene ID | 4582 |
| mRNA Refseq | NM_001018016 |
| Protein Refseq | NP_001018016 |
| MIM | 158340 |
| UniProt ID | P15941 |

 Tel: 1-631-559-9269 1-516-512-3133

 Email: info@creative-biomart.com  Fax: 1-631-938-8127

 45-1 Ramsey Road, Shirley, NY 11967, USA

SDS-PAGE



 Tel: 1-631-559-9269 1-516-512-3133

 Email: info@creative-biomart.com  Fax: 1-631-938-8127

 45-1 Ramsey Road, Shirley, NY 11967, USA