

## Recombinant Human MUC1 Protein, Fc-tagged

**Cat. No.** MUC1-343H    **Lot. No.** (See product label)

### SPECIFICATION

<b>Product Overview</b>	Human Mucin-1 (24-380), Fc Tag is expressed from human 293 cells (HEK293). It contains AA Ser 24 - Ser 380 (Accession # P15941-1).
<b>Species</b>	Human
<b>Source</b>	HEK293
<b>ProteinLength</b>	Ser 24 - Ser 380
<b>Description</b>	<p>Mucin-1 (MUC1) is also known as Tumor-associated epithelial membrane antigen (EMA), Polymorphic epithelial mucin (PEM), Peanut-reactive urinary mucin (PUM), PEMT, Krebs von den Lungen-6 (KL-6), CD antigen CD227, Episialin, H23AG. MUC1 is a glycoprotein with extensive O-linked glycosylation of its extracellular domain. Mucins line the apical surface of epithelial cells in the lungs, stomach, intestines, eyes and several other organs. Mucins protect the body from infection by pathogen binding to oligosaccharides in the extracellular domain, preventing the pathogen from reaching the cell surface. Except protective function by binding to pathogens, MUC1 also functions in a cell signaling capacity. Overexpression of MUC1 is often associated with colon, breast, ovarian, lung and pancreatic cancers.</p>
<b>Predicted N Terminal</b>	Ser 24
<b>Form</b>	Lyophilized from 0.22 µm filtered solution in PBS, pH7.4. Normally trehalose is added as protectant before lyophilization.

 Tel: 1-631-559-9269    1-516-512-3133

 Email: [info@creative-biomart.com](mailto:info@creative-biomart.com)     Fax: 1-631-938-8127

 45-1 Ramsey Road, Shirley, NY 11967, USA

<b>Molecular Mass</b>	The protein has a calculated MW of 60.2 kDa. The protein migrates as 70 kDa under reducing (R) condition (SDS-PAGE) due to Glycosylation.
<b>Endotoxin</b>	Less than 1.0 EU per µg by the LAL method.
<b>Purity</b>	>90% as determined by SDS-PAGE.
<b>Storage</b>	For long term storage, the product should be stored at lyophilized state at -20°C or lower. Please avoid repeated freeze-thaw cycles. This product is stable after storage at: -20°C to -70°C for 12 months in lyophilized state; -70°C for 3 months under sterile conditions after reconstitution.
<b>Reconstitution</b>	It is recommended that sterile water be added to the vial to prepare a stock solution of 0.2 ug/ul. Centrifuge the vial at 4°C before opening to recover the entire contents.

## GENE INFORMATION

<b>Gene Name</b>	<a href="#">MUC1 mucin 1, cell surface associated [ Homo sapiens ]</a>
<b>Official Symbol</b>	<a href="#">MUC1</a>
<b>Synonyms</b>	Mucin 1; MUC1; CD227; EMA; H23AG; KL-6; MAM6; MUC-1/SEC; MUC-1/X; MUC1/ZD; PEM; PEMT; PUM; CA 15-3; Episialin
<b>Gene ID</b>	<a href="#">4582</a>
<b>mRNA Refseq</b>	<a href="#">NM_001018016</a>
<b>Protein Refseq</b>	<a href="#">NP_001018016</a>

 Tel: 1-631-559-9269 1-516-512-3133

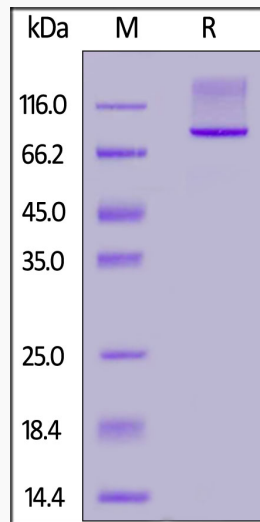
 Email: [info@creative-biomart.com](mailto:info@creative-biomart.com)  Fax: 1-631-938-8127

 45-1 Ramsey Road, Shirley, NY 11967, USA

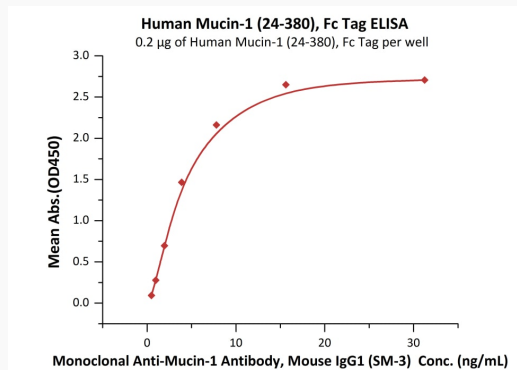
**MIM** 158340

**UniProt ID** P15941

**SDS-PAGE**



**Bioactivity-ELISA**



Immobilized Human Mucin-1 (24-380), Fc Tag at 2 µg/mL (100 µL/well) can bind Monoclonal Anti-Mucin-1 Antibody, Mouse IgG1 (SM-3) with a linear range of 0.5-4 ng/mL.

Tel: 1-631-559-9269 1-516-512-3133

Email: [info@creative-biomart.com](mailto:info@creative-biomart.com) Fax: 1-631-938-8127

45-1 Ramsey Road, Shirley, NY 11967, USA