

Recombinant Human MUC1 Protein (Met1-Gly167), C-His tagged

Cat. No. MUC1-4620H Lot. No. (See product label)

SPECIFICATION

Product Overview	Recombinant human MUC1 (Met 1-Gly167) fused with the C-terminal His tag was expressed in Mammalian cells.
Species	Human
Source	Mammalian Cells
ProteinLength	Met1-Gly167
Form	Lyophilized powder/frozen liquid
Molecular Mass	18.37 kDa
Endotoxin	< 1.0 EU/μg of the protein as determined by the LAL method.
Purity	>90% as determined by SDS-PAGE.
Notes	For research use only.
Storage	Use a manual defrost freezer and avoid repeated freeze thaw cycles. Store at 2 to 8 centigrade for one week. Store at -20 to -80 centigrade for twelve months from the date of receipt.
Storage Buffer	Supplied as solution form in PBS or lyophilized from PBS.

 Tel: 1-631-559-9269 1-516-512-3133

 Email: info@creative-biomart.com  Fax: 1-631-938-8127

 45-1 Ramsey Road, Shirley, NY 11967, USA

Reconstitution Reconstitute in sterile water for a stock solution.

Shipping They are shipped out with dry ice/blue ice unless customers require otherwise.

GENE INFORMATION

Gene Name [MUC1 mucin 1, cell surface associated \[Homo sapiens \(human\) \]](#)

Official Symbol [MUC1](#)

Synonyms

MUC1; mucin 1, cell surface associated; mucin 1, transmembrane, PUM; mucin-1; CD227; PEM; episialin; DF3 antigen; H23 antigen; krebs von den Lungen-6; mucin 1, transmembrane; tumor-associated mucin; carcinoma-associated mucin; polymorphic epithelial mucin; peanut-reactive urinary mucin; tumor associated epithelial mucin; breast carcinoma-associated antigen DF3; tumor-associated epithelial membrane antigen; EMA; PUM; KL-6; MAM6; PEMT; H23AG; MUC-1; MUC-1/X; MUC1/ZD; MUC-1/SEC;

Gene ID [4582](#)

mRNA Refseq [NM_001018016](#)

Protein Refseq [NP_001018016](#)

MIM [158340](#)

UniProt ID [P15941](#)

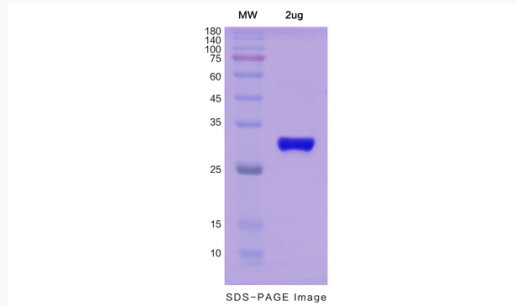
 Tel: 1-631-559-9269 1-516-512-3133

 Email: info@creative-biomart.com  Fax: 1-631-938-8127

 45-1 Ramsey Road, Shirley, NY 11967, USA



SDS-PAGE



Tel: 1-631-559-9269 1-516-512-3133

Email: info@creative-biomart.com Fax: 1-631-938-8127

45-1 Ramsey Road, Shirley, NY 11967, USA