

Recombinant Human MUC1 Protein, GST-tagged

Cat. No. MUC1-5745H Lot. No. (See product label)

SPECIFICATION

Product Overview	Human MUC1 partial ORF (NP_877418.1, 315 a.a. - 420 a.a.) recombinant protein with GST-tag at N-terminal.
Species	Human
Source	Wheat Germ
Description	<p>This gene is a member of the mucin family and encodes a membrane bound, glycosylated phosphoprotein. The protein is anchored to the apical surface of many epithelia by a transmembrane domain, with the degree of glycosylation varying with cell type. It also includes a 20 aa variable number tandem repeat (VNTR) domain, with the number of repeats varying from 20 to 120 in different individuals. The protein serves a protective function by binding to pathogens and also functions in a cell signaling capacity. Overexpression, aberrant intracellular localization, and changes in glycosylation of this protein have been associated with carcinomas. Multiple alternatively spliced transcript variants that encode different isoforms of this gene have been reported, but the full-length nature of only some has been determined. [provided by RefSeq]</p>
Molecular Mass	37.4 kDa
AA Sequence	NSSLEDPSTDYYQELQRDISEMFLQIYKQGGFLGLSNIKFRPGSVVVQLTLAFREGTI NVHDMETQFNQYKTEAASRYNLTISDVSVDVPPFFSAQSGAGVPGWG
Applications	Enzyme-linked Immunoabsorbent Assay

 Tel: 1-631-559-9269 1-516-512-3133

 Email: info@creative-biomart.com  Fax: 1-631-938-8127

 45-1 Ramsey Road, Shirley, NY 11967, USA

Western Blot (Recombinant protein)
 Antibody Production
 Protein Array

Notes	Best use within three months from the date of receipt of this protein.
Storage	Store at -80 centigrade. Aliquot to avoid repeated freezing and thawing.
Storage Buffer	50 mM Tris-HCl, 10 mM reduced Glutathione, pH=8.0 in the elution buffer.

GENE INFORMATION

Gene Name	MUC1 mucin 1, cell surface associated [Homo sapiens]
Official Symbol	MUC1
Synonyms	MUC1; mucin 1, cell surface associated; mucin 1, transmembrane , PUM; mucin-1; CD227; PEM; episialin; DF3 antigen; H23 antigen; krebs von den Lungen-6; mucin 1, transmembrane; tumor-associated mucin; carcinoma-associated mucin; polymorphic epithelial mucin; peanut-reactive urinary mucin; tumor associated epithelial mucin; breast carcinoma-associated antigen DF3; tumor-associated epithelial membrane antigen; EMA; PUM; KL-6; MAM6; PEMT; H23AG; MUC-1; MUC-1/X; MUC1/ZD; MUC-1/SEC;
Gene ID	4582
mRNA Refseq	NM_001018016
Protein Refseq	NP_001018016
MIM	158340

 Tel: 1-631-559-9269 1-516-512-3133

 Email: info@creative-biomart.com  Fax: 1-631-938-8127

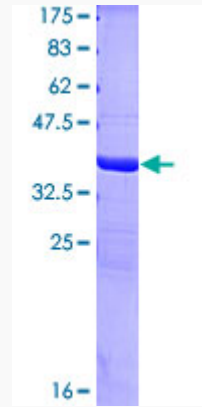
 45-1 Ramsey Road, Shirley, NY 11967, USA

UniProt ID

P15941

Quality Control

Testing:



12.5% SDS-PAGE Stained with Coomassie Blue.

 Tel: 1-631-559-9269 1-516-512-3133

 Email: info@creative-biomart.com  Fax: 1-631-938-8127

 45-1 Ramsey Road, Shirley, NY 11967, USA