

Recombinant Human MUC1 protein, GST-tagged

Cat. No. MUC1-6733H Lot. No. (See product label)

SPECIFICATION

Product Overview	Recombinant Human MUC1 protein(24-130 aa), fused with N-terminal GST tag, was expressed in E.coli.
Species	Human
Source	E.coli
ProteinLength	24-130 aa
Form	The purified protein was lyophilized from sterile phosphate-buffered saline (PBS: 58 mM Na ₂ HPO ₄ , 17 mM NaH ₂ PO ₄ , 68 mM NaCl, pH 8.0). Prior to lyophilization, 5% (w/v) trehalose and 5% (w/v) mannitol were incorporated as cryoprotective excipients. The protein was eluted with a buffer containing 100 mM reduced glutathione (GSH).
AASequence	SGHASSTPGGEKETSATQRSSVPSSTEKNAVSM TSSVLSSHSPGSGSSTTQGQDV TLAPATEPASGSAATWGQDVTSVPVTRPALGSTTPPAHDVTSAPDNKPAPGS
Purity	85%, by SDS-PAGE with Coomassie Brilliant Blue staining.
Storage	Store at 2-8°C for 1-2 weeks. Aliquot and store at -20°C to -80°C for up to 3 months, reconstitution with sterile water and addition of an equal volume of glycerol. Avoid repeat freeze-thaw cycles.
Reconstitution	Dissolve the product in 200

 Tel: 1-631-559-9269 1-516-512-3133

 Email: info@creative-biomart.com  Fax: 1-631-938-8127

 45-1 Ramsey Road, Shirley, NY 11967, USA

µl sterile water to achieve a working concentration of 0.25 g/µl. If experimental compatibility allows, mix the aqueous solution with an equal volume of glycerol (1:1 ratio) after initial reconstitution.

GENE INFORMATION

Gene Name [MUC1 mucin 1, cell surface associated \[Homo sapiens \]](#)

Official Symbol [MUC1](#)

Synonyms

MUC1; mucin 1, cell surface associated; mucin 1, transmembrane , PUM; mucin-1; CD227; PEM; episialin; DF3 antigen; H23 antigen; krebs von den Lungen-6; mucin 1, transmembrane; tumor-associated mucin; carcinoma-associated mucin; polymorphic epithelial mucin; peanut-reactive urinary mucin; tumor associated epithelial mucin; breast carcinoma-associated antigen DF3; tumor-associated epithelial membrane antigen; EMA; PUM; KL-6; MAM6; PEMT; H23AG; MUC-1; MUC-1/X; MUC1/ZD; MUC-1/SEC;

Gene ID [4582](#)

mRNA Refseq [NM_001018016](#)

Protein Refseq [NP_001018016](#)

MIM [158340](#)

UniProt ID [P15941](#)

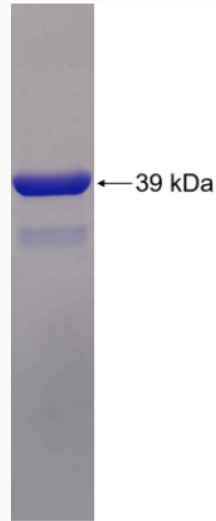
 Tel: 1-631-559-9269 1-516-512-3133

 Email: info@creative-biomart.com  Fax: 1-631-938-8127

 45-1 Ramsey Road, Shirley, NY 11967, USA



SDS-PAGE



Tel: 1-631-559-9269 1-516-512-3133

Email: info@creative-biomart.com Fax: 1-631-938-8127

45-1 Ramsey Road, Shirley, NY 11967, USA