

## Recombinant Human MUC1 protein, His-tagged

Cat. No. MUC1-7865H Lot. No. (See product label)

### SPECIFICATION

<b>Product Overview</b>	Recombinant Human MUC1 protein(P15941)(24-273aa), fused with N-terminal His tag, was expressed in E.coli.
<b>Species</b>	Human
<b>Source</b>	E.coli
<b>ProteinLength</b>	24-273aa
<b>Form</b>	If the delivery form is liquid, the default storage buffer is Tris/PBS-based buffer, 5%-50% glycerol. If the delivery form is lyophilized powder, the buffer before lyophilization is Tris/PBS-based buffer, 6% Trehalose, pH 8.0.
<b>Molecular Mass</b>	31.2 kDa
<b>Purity</b>	Greater than 90% as determined by SDS-PAGE.
<b>Storage</b>	Store at -20°C/-80°C upon receipt, aliquoting is necessary for mutiple use. Avoid repeated freeze-thaw cycles.
<b>Reconstitution</b>	We recommend that this vial be briefly centrifuged prior to opening to bring the contents to the bottom. Please reconstitute protein in deionized sterile water to a concentration of 0.1-1.0 mg/mL. We recommend to add 5-50% of glycerol (final concentration) and aliquot for long-term storage at -20°C/-80°C.

 Tel: 1-631-559-9269 1-516-512-3133

 Email: [info@creative-biomart.com](mailto:info@creative-biomart.com)  Fax: 1-631-938-8127

 45-1 Ramsey Road, Shirley, NY 11967, USA

**AA Sequence**

SGHASSTPGGEKETSATQRSSVPSSTEKNALSTGVSFFFLSFHISNLQFNSSLEDPS  
 TDYYQELQRDISEMFLQIYKQGGFLGLSNIKFRPGSVVVQLTLAFREGTINVHDVETQ  
 FNQYKTEAASRYNLTISDVSVDVPPFSAQSGAGVPGWGIALLVLCVLVALAIVYLI  
 ALAVCQCRRKNYGQLDIFPARDTYHPMSEYPTYHHTHGRYVPPSSTDRSPYEKVSAG  
 NGGSSLSYTNPAVAATSANL

## GENE INFORMATION

**Gene Name** [MUC1 mucin 1, cell surface associated \[ Homo sapiens \]](#)

**Official Symbol** [MUC1](#)

**Synonyms**

MUC1; mucin 1, cell surface associated; mucin 1, transmembrane , PUM; mucin-1; CD227; PEM; episialin; DF3 antigen; H23 antigen; krebs von den Lungen-6; mucin 1, transmembrane; tumor-associated mucin; carcinoma-associated mucin; polymorphic epithelial mucin; peanut-reactive urinary mucin; tumor associated epithelial mucin; breast carcinoma-associated antigen DF3; tumor-associated epithelial membrane antigen; EMA; PUM; KL-6; MAM6; PEMT; H23AG; MUC-1; MUC-1/X; MUC1/ZD; MUC-1/SEC;

**Gene ID** [4582](#)

**mRNA Refseq** [NM\\_001018016](#)

**Protein Refseq** [NP\\_001018016](#)

**MIM** [158340](#)

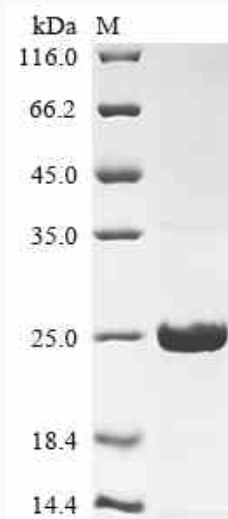
**UniProt ID** [P15941](#)

 Tel: 1-631-559-9269 1-516-512-3133

 Email: [info@creative-biomart.com](mailto:info@creative-biomart.com)  Fax: 1-631-938-8127

 45-1 Ramsey Road, Shirley, NY 11967, USA

**SDS-PAGE**



 Tel: 1-631-559-9269 1-516-512-3133

 Email: [info@creative-biomart.com](mailto:info@creative-biomart.com)  Fax: 1-631-938-8127

 45-1 Ramsey Road, Shirley, NY 11967, USA