

Recombinant Human MUC16 Protein, His tagged

Cat. No. MUC16-01H Lot. No. (See product label)

SPECIFICATION

Product Overview Recombinant Human MUC16 Protein with His-tag was expressed in HEK293.

Species Human

Source HEK293

Description

This gene encodes a protein that is a member of the mucin family. Mucins are high molecular weight, O-glycosylated proteins that play an important role in forming a protective mucous barrier, and are found on the apical surfaces of the epithelia. The encoded protein is a membrane-tethered mucin that contains an extracellular domain at its amino terminus, a large tandem repeat domain, and a transmembrane domain with a short cytoplasmic domain. The amino terminus is highly glycosylated, while the repeat region contains 156 amino acid repeats unit that are rich in serines, threonines, and prolines. Interspersed within the repeats are Sea urchin sperm protein Enterokinase and Agrin (SEA) modules, leucine-rich repeats and ankyrin (ANK) repeats. These regions together form the ectodomain, and there is a potential cleavage site found near an SEA module close to the transmembrane domain. This protein is thought to play a role in forming a barrier, protecting epithelial cells from pathogens. Products of this gene have been used as a marker for different cancers, with higher expression levels associated with poorer outcomes.

Molecular Mass ~ 75 kDa

AA Sequence MEKIPVSAFLLLVALSYTLAHHHHHPGSRKFNTTERVLQGLLRPLFKNTSVGPLYL

 Tel: 1-631-559-9269 1-516-512-3133

 Email: info@creative-biomart.com  Fax: 1-631-938-8127

 45-1 Ramsey Road, Shirley, NY 11967, USA

GCRLTLLRPEKDGEATGVDAICTHRPDPTGPGLDREQLYLELSQLTHSITELGPYTLDRDSLYVNGFTHRSSVPTTSTGVVSEEPFTLNFTINNLRYMADMGGQPGSLKFNITDNV
 MQHLLSPLFQRSSLGARYTGCRVIALRSVKNGAETRVDLLCTYLQPLSGPGLPIKQV
 FHLSQQTHGITRLGPYSLDKDSLYLNGYNPDPDEPPTTPKPATTFLLPPLSEATTA
 MGYHLKTLTLNFTISNLQYSPDMGKGSATFNSTEGVLQHLLRPLFQKSSMGPFFYL
 CQLISLRPEKDGAATGVDTTCTYHPDPVGPGLDIQQLYWELSQLTHGVTQLGFYVLD
 RDSLFIGYAPQNL SIRGEYQINFHIVNWNLSNPDPPTSSEYITLLRDIQDKVTTLYKGS
 QLHDTFRFCLVTNLTMDSVLVTVKALFSSNLDPSLVEQVFLDKTLNASFWLWGSTYQ
 LVDIHVTEMESSVYQPTSSSSTQHFYLNFTITNLPYSQDKAQPGTTNYQRNKRNIED
 ALNQLFRNSSIKSYFSDCQVSTFRSVPNRHHTGVDSLCNFSPLARRVDRVAIYEEFL
 RMTRNGTQLQNFTLDRSSVLVDGYSPNRNEPLTGNSDLP

Purity ≥90% SDS-PAGE

Storage Long Term Storage at -20 to -80 centigrade. Avoid freeze/thaw cycles.

Concentration 0.55 mg/mL

Storage Buffer PBS, pH 7.4

GENE INFORMATION

Gene Name [MUC16 mucin 16, cell surface associated \[Homo sapiens \(human\) \]](#)

Official Symbol [MUC16](#)

Synonyms MUC16; mucin 16, cell surface associated; mucin-16; CA125; FLJ14303; CA-125; MUC-16; CA125 ovarian cancer antigen; ovarian carcinoma antigen CA125; ovarian cancer-related tumor marker CA125;

Gene ID [94025](#)

 Tel: 1-631-559-9269 1-516-512-3133

 Email: info@creative-biomart.com  Fax: 1-631-938-8127

 45-1 Ramsey Road, Shirley, NY 11967, USA

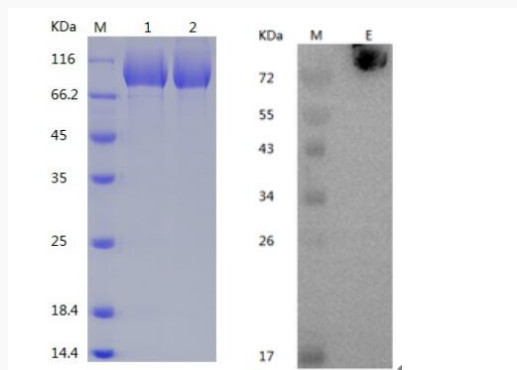
mRNA Refseq [NM_024690](#)

Protein Refseq [NP_078966](#)

MIM [606154](#)

UniProt ID [Q8WXI7](#)

**SDS-PAGE and WB
analysis of purified
recombinant MUC16-
N-His**



Anti-His detection and ECL revelation.

M. Molecular weight marker

1. Reduced sample

2. Non-reduced sample

 Tel: 1-631-559-9269 1-516-512-3133

 Email: info@creative-biomart.com  Fax: 1-631-938-8127

 45-1 Ramsey Road, Shirley, NY 11967, USA