

# Recombinant Human MUC16 protein(Asp12783-Ser13467), His-tagged

Cat. No. MUC16-10H    Lot. No. (See product label)

## SPECIFICATION

|                         |  |
|-------------------------|--|
| <b>Product Overview</b> | Recombinant Human MUC16 protein(Asp12783-Ser13467)(Q8WXI7) is expressed from HEK293 with His tag at the C-Terminus.  |
| <b>Species</b>          | Human  |
| <b>Source</b>           | HEK293   |
| <b>ProteinLength</b>    | 12660-12923 a.a.   |
| <b>Form</b>             | Lyophilized from 0.22µm filtered solution in PBS (pH 7.4). Normally 8% trehalose is added as protectant before lyophilization.                                   |
| <b>Bio-activity</b>     | Immobilized Human CA125, His Tag at 1µg/ml (100µl/well) on the plate. Dose response curve for Human MSLN, hFc Tag with the EC50 of 7.8ng/ml determined by ELISA. |
| <b>Molecular Mass</b>   | The protein has a predicted MW of 76.17 kDa. Due to glycosylation, the protein migrates to 90-140 kDa based on Tris-Bis PAGE result.                             |
| <b>Endotoxin</b>        | Less than 1EU per µg by the LAL method.  |
| <b>Purity</b>           | > 95% as determined by Tris-Bis PAGE<br>> 95% as determined by HPLC  |

 Tel: 1-631-559-9269    1-516-512-3133

 Email: [info@creative-biomart.com](mailto:info@creative-biomart.com)     Fax: 1-631-938-8127

 45-1 Ramsey Road, Shirley, NY 11967, USA

**Storage**

-20 to -80°C for 12 months as supplied from date of receipt.  
 -80°C for 3-6 months after reconstitution.  
 2-8°C for 2-7 days after reconstitution.  
 Recommend to aliquot the protein into smaller quantities for optimal storage. Please minimize freeze-thaw cycles.

**Reconstitution**

Centrifuge the tube before opening. Reconstituting to a concentration more than 100 µg/ml is recommended. Dissolve the lyophilized protein in distilled water.

## GENE INFORMATION

**Gene Name** [MUC16 mucin 16, cell surface associated \[ Homo sapiens \]](#)

**Official Symbol** [MUC16](#)

**Synonyms** MUC16; mucin 16, cell surface associated; mucin-16; CA125; FLJ14303; CA-125; MUC-16; CA125 ovarian cancer antigen; ovarian carcinoma antigen CA125; ovarian cancer-related tumor marker CA125

**Gene ID** [94025](#)

**mRNA Refseq** [NM\\_024690](#)

**Protein Refseq** [NP\\_078966](#)

**MIM** [606154](#)

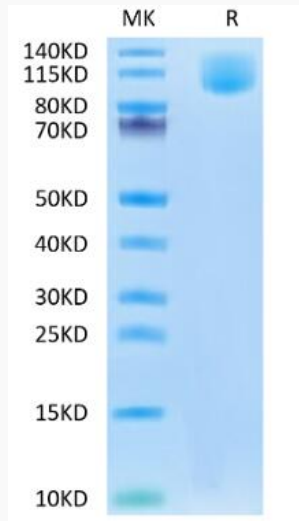
**UniProt ID** [Q8WXI7](#)

 Tel: 1-631-559-9269 1-516-512-3133

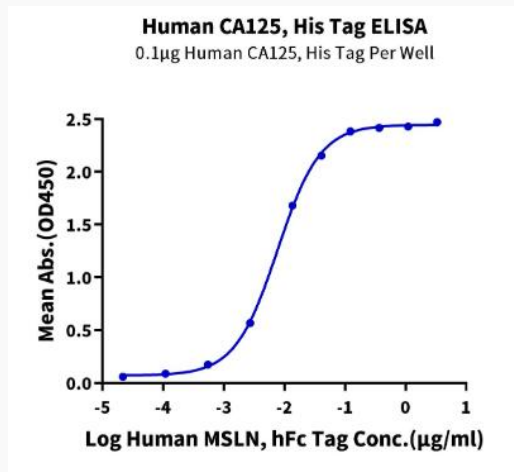
 Email: [info@creative-biomart.com](mailto:info@creative-biomart.com)  Fax: 1-631-938-8127

 45-1 Ramsey Road, Shirley, NY 11967, USA

**Tris-Bis PAGE**



**ELISA Data**



Tel: 1-631-559-9269 1-516-512-3133

Email: [info@creative-biomart.com](mailto:info@creative-biomart.com) Fax: 1-631-938-8127

45-1 Ramsey Road, Shirley, NY 11967, USA