

## Recombinant Human MUC16 protein, His-Avi-tagged

Cat. No. MUC16-437H Lot. No. (See product label)

### SPECIFICATION

<b>Product Overview</b>	Recombinant Human MUC16 protein(Q8WXI7)(Gly12660-Met12923), fused with C-terminal His and Avi tag, was expressed in HEK293.
<b>Species</b>	Human
<b>Source</b>	HEK293
<b>ProteinLength</b>	Gly12660-Met12923
<b>Tag</b>	C-His-Avi
<b>Form</b>	Lyophilized from 0.22µm filtered solution in PBS (pH 7.4). Normally 5% trehalose is added as protectant before lyophilization.
<b>Bio-activity</b>	Immobilized Human CA125, His Tag at 5µg/ml (100µl/Well) on the plate. Dose response curve for Human MSLN, hFc Tag with the EC50 of 1.13µg/ml determined by ELISA.
<b>Molecular Mass</b>	The protein has a predicted MW of 31.3 kDa. Due to glycosylation, the protein migrates to 50-80 kDa based on Tris-Bis PAGE result.
<b>Endotoxin</b>	Less than 1EU per µg by the LAL method.
<b>Purity</b>	> 95% as determined by Tris-Bis PAGE; > 95% as determined by HPLC

 Tel: 1-631-559-9269 1-516-512-3133

 Email: [info@creative-biomart.com](mailto:info@creative-biomart.com)  Fax: 1-631-938-8127

 45-1 Ramsey Road, Shirley, NY 11967, USA

**Storage** Reconstituted protein stable at -80°C for 12 months, 4°C for 1 week. Use a manual defrost freezer and avoid repeated freeze-thaw cycles.

**Reconstitution** Centrifuge tubes before opening. Reconstituting to a concentration more than 100 µg/ml is recommended. Dissolve the lyophilized protein in distilled water.

## GENE INFORMATION

**Gene Name** [MUC16 mucin 16, cell surface associated \[ Homo sapiens \]](#)

**Official Symbol** [MUC16](#)

**Synonyms** MUC16; mucin 16, cell surface associated; mucin-16; CA125; FLJ14303; CA-125; MUC-16; CA125 ovarian cancer antigen; ovarian carcinoma antigen CA125; ovarian cancer-related tumor marker CA125;

**Gene ID** [94025](#)

**mRNA Refseq** [NM\\_024690](#)

**Protein Refseq** [NP\\_078966](#)

**MIM** [606154](#)

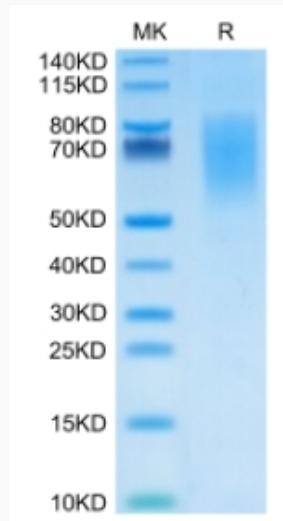
**UniProt ID** [Q8WXI7](#)

 Tel: 1-631-559-9269 1-516-512-3133

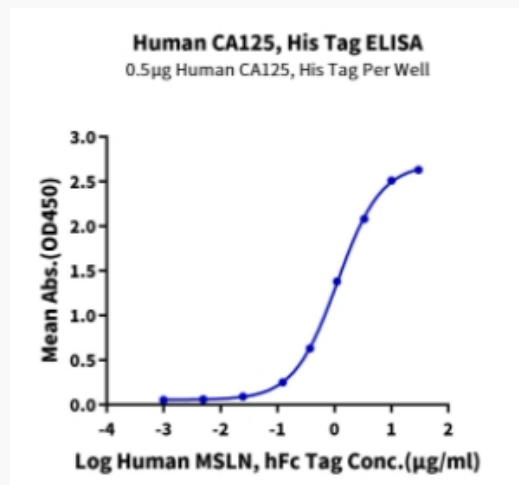
 Email: [info@creative-biomart.com](mailto:info@creative-biomart.com)  Fax: 1-631-938-8127

 45-1 Ramsey Road, Shirley, NY 11967, USA

**Tris-Bis PAGE**



**ELISA Data**



 Tel: 1-631-559-9269 1-516-512-3133

 Email: [info@creative-biomart.com](mailto:info@creative-biomart.com)  Fax: 1-631-938-8127

 45-1 Ramsey Road, Shirley, NY 11967, USA