

Recombinant Human MUC2 Protein, GST-tagged

Cat. No. MUC2-155H Lot. No. (See product label)

SPECIFICATION

Product Overview	Recombinant Human MUC2 Protein, fused to GST-tag, was expressed in E.coli
Species	Human
Source	E.coli
ProteinLength	4958-5180 aa
Description	Mucins comprise a heterogeneous family of glycoproteins expressed by most specialized epithelial tissues of mucosal surfaces. MUC2 expression is detected in such human tissues as normal colon, breast, prostate, salivary gland, and in gastrointestinal, colonic, breast and prostate neoplasia. Of the known mucins, only MUC2, MUC5AC, and MUC5B are consistently associated with goblet cells.
Form	GST-MUC2 fusion protein was purified from E.coli and packaged at 500µg/ml in 50mM Tris-Acetate, pH7.5, 1mM EDTA, 20% Glycerol.
Molecular Mass	50 kDa
AA Sequence	LLNVIACTHVPCNTSCSPGFELMEAPGECCKKCEQTHCIIKRPDNQHVILKPGDFKS DPKNNCTFFSCVKIHNQLISSVSNITCPNFDASICIPGSITFMPNGCCKTCTPRNETRV PCSTVPVTTEVSYAGCTKTVLMNHCSGSCGTFVMYSAKAQALDHSCSCCKEEKTS QREVLVSCPNGGSLTHTYTHIESCQCQDQDTCGLPTGTSRRAR RSPRHLGSG
Applications	ELISA

 Tel: 1-631-559-9269 1-516-512-3133

 Email: info@creative-biomart.com  Fax: 1-631-938-8127

 45-1 Ramsey Road, Shirley, NY 11967, USA

	Inhibition Assays Western Blots
Storage	Store Vial at 4 centigrade for 1-2 weeks. For long term storage, store at -70 centigrade for up to twelve months from date of receipt. Avoid repeated freeze-thaw cycles.
Concentration	0.5 mg/ml
Official Full Name	Mucin 2, oligomeric mucus/gel-forming

GENE INFORMATION

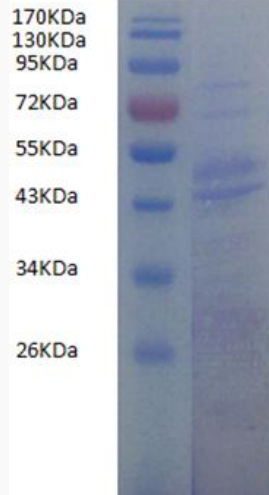
Gene Name	MUC2 mucin 2, oligomeric mucus/gel-forming [Homo sapiens (human)]
Official Symbol	MUC2
Synonyms	MLP; SMUC; MUC-2
Gene ID	4583
mRNA Refseq	NM_002457
Protein Refseq	NP_002448
MIM	158370
UniProt ID	A0A6Q8PFN2

 Tel: 1-631-559-9269 1-516-512-3133

 Email: info@creative-biomart.com  Fax: 1-631-938-8127

 45-1 Ramsey Road, Shirley, NY 11967, USA

SDS-PAGE



Reducing SDS-PAGE analysis of purified MUC2.

 Tel: 1-631-559-9269 1-516-512-3133

 Email: info@creative-biomart.com  Fax: 1-631-938-8127

 45-1 Ramsey Road, Shirley, NY 11967, USA