

Recombinant Human MUM1 protein, GST-tagged

Cat. No. MUM1-1112H Lot. No. (See product label)

SPECIFICATION

Product Overview	Recombinant Human MUM1 protein(1-152 aa), fused with N-terminal GST tag, was expressed in E.coli.
Species	Human
Source	E.coli
ProteinLength	1-152 aa
Form	The purified protein was lyophilized from sterile phosphate-buffered saline (PBS: 58 mM Na ₂ HPO ₄ , 17 mM NaH ₂ PO ₄ , 68 mM NaCl, pH 8.0). Prior to lyophilization, 5% (w/v) trehalose and 5% (w/v) mannitol were incorporated as cryoprotective excipients.
AASequence	MLPDRSRAARDRANQKLVEYIVKAKGAESHLRAILKSRKPSRWLQTFLLSSSQYVTCV ETYLEDEGQLDLVVKYLQGVYQEVGAKVLQRTNGDRIRFILDVLLPEAIICAISAVDEV DYKTAEEKYIKGPSLSYREKEIFDNQLLEERNRRRR
Purity	85%, by SDS-PAGE with Coomassie Brilliant Blue staining.
Storage	Store at 2-8°C for 1-2 weeks. Aliquot and store at -20°C to -80°C for up to 3 months, reconstitution with sterile water and addition of an equal volume of glycerol. Avoid repeat freeze-thaw cycles.
Reconstitution	Dissolve the product in 200 µl sterile water to achieve a working concentration of 0.25

 Tel: 1-631-559-9269 1-516-512-3133

 Email: info@creative-biomart.com  Fax: 1-631-938-8127

 45-1 Ramsey Road, Shirley, NY 11967, USA

g/μl. If experimental compatibility allows, mix the aqueous solution with an equal volume of glycerol (1:1 ratio) after initial reconstitution.

GENE INFORMATION

Gene Name	MUM1 melanoma associated antigen (mutated) 1 [Homo sapiens]
Official Symbol	MUM1
Synonyms	MUM1; melanoma associated antigen (mutated) 1; PWWP domain-containing protein MUM1; MUM 1; protein expandere; melanoma ubiquitous mutated protein; mutated melanoma-associated antigen 1; MUM-1; EXPAND1; HSPC211; FLJ14868; FLJ22283; MGC131891; MGC163315;
Gene ID	84939
mRNA Refseq	NM_032853
Protein Refseq	NP_116242
UniProt ID	Q2TAK8

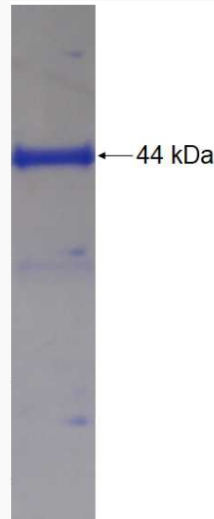
 Tel: 1-631-559-9269 1-516-512-3133

 Email: info@creative-biomart.com  Fax: 1-631-938-8127

 45-1 Ramsey Road, Shirley, NY 11967, USA



SDS-PAGE



☎ Tel: 1-631-559-9269 1-516-512-3133

☎ Email: info@creative-biomart.com ☎ Fax: 1-631-938-8127

☎ 45-1 Ramsey Road, Shirley, NY 11967, USA