

## Recombinant Human MUT Protein, GST-tagged

Cat. No. MUT-5762H Lot. No. (See product label)

### SPECIFICATION

<b>Product Overview</b>	Human MUT full-length ORF ( AAH16282, 1 a.a. - 750 a.a.) recombinant protein with GST-tag at N-terminal.
<b>Species</b>	Human
<b>Source</b>	Wheat Germ
<b>Description</b>	This gene encodes the mitochondrial enzyme methylmalonyl Coenzyme A mutase. In humans, the product of this gene is a vitamin B12-dependent enzyme which catalyzes the isomerization of methylmalonyl-CoA to succinyl-CoA, while in other species this enzyme may have different functions. Mutations in this gene may lead to various types of methylmalonic aciduria. [provided by RefSeq]
<b>Molecular Mass</b>	108.24 kDa
<b>AA Sequence</b>	MLRAKNQLFLLSPHYLRQVKESGSRLIQQRLLHQQQLHPEWAALAKKQLKGKNP EDLIWHTPEGISIKPLYSKGDTMDLPEELPGVKPFTRGPYPTMYTFRPWITIRQYAGF STVEESNKFYKDNKAGQQGLSVAFDLATHRGYSDNPRVRGDVGMAGVAIDTVED TKILFDGIPLEKMSVSMTMNGAVIPVLANFIVTGEEQGVPEKLTGTIQNDILKEFMVR NTYIFPPEPSMKIADIFEYTAKHMPKFNSISISGYHMQEAGADAILELAYTLADGLEYS RTGLQAGLTIDEFAPRLSFFWIGMNFYMEIAKMRAGRRLWAHLIEKMFQPKNSKSL LLRAHCQTSGWSLTEQDPYNNIVRTAIEAMAAVFGGTQSLHTNSFDEALGLPTVKSA RIARNTQIIIQEESGIPKVADPWGGSYMMECLTNDVYDAALKLINEIEEMGGMAKAVA EGIPKLRIEECAARRQARIDSGSEVIVGVNKYQLEKEDTVEVLAI DNTSVRNRQIEK LK

Tel: 1-631-559-9269 1-516-512-3133

Email: [info@creative-biomart.com](mailto:info@creative-biomart.com) Fax: 1-631-938-8127

45-1 Ramsey Road, Shirley, NY 11967, USA

KIKSSRDQALAERCLAALTECAASGDGNILALAVDASRARCTVGEITDALKKVFGEHK  
 ANDRMVSGAYRQEFGESKEITSAIKRVHKFMEREGRRPRLLVAKMGQDGHDRGAK  
 VIATGFADLGFVDIGPLFQTPREVAQQAVDADVHAVGVNTLAAGHKTLVPELIKELN  
 SLGRPDILVMCGGVIPPQDYEFLEFVGVSNVFGPGTRIPKAAVQVLDDIEKCLEKKQ  
 QSV

**Applications**  
 Enzyme-linked Immunoabsorbent Assay  
 Western Blot (Recombinant protein)  
 Antibody Production  
 Protein Array

**Notes**  
 Best use within three months from the date of receipt of this protein.

**Storage**  
 Store at -80 centigrade. Aliquot to avoid repeated freezing and thawing.

**Storage Buffer**  
 50 mM Tris-HCl, 10 mM reduced Glutathione, pH=8.0 in the elution buffer.

## GENE INFORMATION

**Gene Name**  
 MUT methylmalonyl CoA mutase [ Homo sapiens ]

**Official Symbol**  
 MUT

**Synonyms**  
 MUT; methylmalonyl CoA mutase; methylmalonyl Coenzyme A mutase;  
 methylmalonyl-CoA mutase, mitochondrial; methylmalonyl-CoA isomerase; MCM;

**Gene ID**  
 4594

**mRNA Refseq**  
 NM\_000255

**Protein Refseq**  
 NP\_000246

 Tel: 1-631-559-9269 1-516-512-3133

 Email: [info@creative-biomart.com](mailto:info@creative-biomart.com)  Fax: 1-631-938-8127

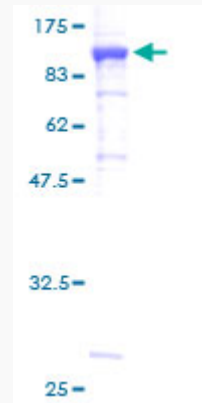
 45-1 Ramsey Road, Shirley, NY 11967, USA

**MIM** 609058

**UniProt ID** P22033

**Quality Control**

**Testing:**



12.5% SDS-PAGE Stained with Coomassie Blue.

 Tel: 1-631-559-9269 1-516-512-3133

 Email: [info@creative-biomart.com](mailto:info@creative-biomart.com)  Fax: 1-631-938-8127

 45-1 Ramsey Road, Shirley, NY 11967, USA