

Recombinant Human MUTYH Protein, GST-tagged

Cat. No. MUTYH-5765H Lot. No. (See product label)

SPECIFICATION

Product Overview Human MUTYH full-length ORF (NP_001041636.1, 1 a.a. - 535 a.a.) recombinant protein with GST-tag at N-terminal.

Species Human

Source Wheat Germ

Description This gene encodes a DNA glycosylase involved in oxidative DNA damage repair. The enzyme excises adenine bases from the DNA backbone at sites where adenine is inappropriately paired with guanine, cytosine, or 8-oxo-7,8-dihydroguanine, a major oxidatively damaged DNA lesion. The protein is localized to the nucleus and mitochondria. Mutations in this gene result in heritable predisposition to colon and stomach cancer. Multiple transcript variants encoding different isoforms have been found for this gene. [provided by RefSeq]

Molecular Mass 85.5 kDa

AA Sequence MTPLVSRLSRLWAIMRKPRAAVGSGRKQAASQEGRQKHAKNNSQAKPSACDGLA
RQPEEVVLQASVSSYHLFRDVAEVTAFRGSLLSWYDQEKRDLPWRRRAEDEMDLD
RRAYAVVWSEVMLQQTQVATVINYYTGWMQKWPTLQDLASASLEEVLWAGLG
YYSRGRRLQEGARKVVEELGGHMPRTAETLQQLPGVGRYTAGAIAASIAFGQATGV
VDGNVARVLCRVRAIGADPSSTLVSQQLWGLAQQQLVDPARPGDFNQAAMELGATV
CTPQRPLCSQCPVESLCRARQRVEQEQLLASGSLSGSPDVEECAPNTGQCHLCLP
PSEPWDQTLGVVNFPRKASRKPPREESSATCVLEQPGALGAQILLVQRPNSGLLAG

 Tel: 1-631-559-9269 1-516-512-3133

 Email: info@creative-biomart.com  Fax: 1-631-938-8127

 45-1 Ramsey Road, Shirley, NY 11967, USA

LWEFPSVTWEPSEQLQRKALLQELQRWAGPLPATHLRHLGEVVHTFSHIKLTQVY
 GLALEGQTPVTTVPPGARWLTQEEFHTAAVSTAMKKVFRVYQGQQPGTCMGSKRS
 QVSSPCSRKKPRMGQQVLDNFFRSHISTDAHSLNSAAQ

Applications	Enzyme-linked Immunoabsorbent Assay Western Blot (Recombinant protein) Antibody Production Protein Array
Notes	Best use within three months from the date of receipt of this protein.
Storage	Store at -80 centigrade. Aliquot to avoid repeated freezing and thawing.
Storage Buffer	50 mM Tris-HCl, 10 mM reduced Glutathione, pH=8.0 in the elution buffer.

GENE INFORMATION

Gene Name	MUTYH mutY homolog (E. coli) [Homo sapiens]
Official Symbol	MUTYH
Synonyms	MUTYH; mutY homolog (E. coli); mutY (E. coli) homolog; A/G-specific adenine DNA glycosylase; MYH; CYP2C; MGC4416;
Gene ID	4595
mRNA Refseq	NM_001048171
Protein Refseq	NP_001041636
MIM	604933

 Tel: 1-631-559-9269 1-516-512-3133

 Email: info@creative-biomart.com  Fax: 1-631-938-8127

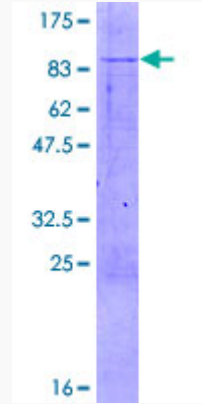
 45-1 Ramsey Road, Shirley, NY 11967, USA

UniProt ID

Q9UIF7

Quality Control

Testing:



12.5% SDS-PAGE Stained with Coomassie Blue.

 Tel: 1-631-559-9269 1-516-512-3133

 Email: info@creative-biomart.com  Fax: 1-631-938-8127

 45-1 Ramsey Road, Shirley, NY 11967, USA