

Recombinant Human MVD Protein, Myc/DDK-tagged, C13 and N15-labeled

Cat. No. MVD-576H **Lot. No.** (See product label)

SPECIFICATION

Product Overview	MVD MS Standard C13 and N15-labeled recombinant protein (NP_002452) with a C-terminal MYC/DDK tag, was expressed in HEK293 cells.
Species	Human
Source	HEK293
Description	The enzyme mevalonate pyrophosphate decarboxylase catalyzes the conversion of mevalonate pyrophosphate into isopentenyl pyrophosphate in one of the early steps in cholesterol biosynthesis. It decarboxylates and dehydrates its substrate while hydrolyzing ATP.
Molecular Mass	43.4 kDa
AA Sequence	MASEKPLAAVTCTAPVNIAMIKYWGKRDEELVLPINSSLSVTLHQDQLKTTTTAVISKD FTEDRIWLNGREEDVGQPRLQAACLREIRCLARKRRNSRDGDPLPSSLSCKVHVASV NNFPTAAGLASSAAGYACLAYTLARVYGVESDLSEVARRGSGSACRSLYGGFVEW QMGEQADGKDSIARQVAPESHWPPELRVLLVLSAEKCLTGSTVGMRASVETSPLLR FRAESVVPARMAEMARCIRERDFPSFAQLTMKDSNQFHATCLDTFPPISYLNAIASWR IIHLVHRFNAAHGDTKVAYTFDAGPNAVIFTLDDTVAEFVAAVWHGFPPGSNGDTFL KGLQVRPAPLSAELQAALAMEPTPGGVKYIIVTQVGPQPILDDPCAHLGPDGLPK PAATRTRPLEQKLISEEDLAANDILDYKDDDDKV
Purity	> 80% as determined by SDS-PAGE and Coomassie blue staining

 Tel: 1-631-559-9269 1-516-512-3133

 Email: info@creative-biomart.com  Fax: 1-631-938-8127

 45-1 Ramsey Road, Shirley, NY 11967, USA

Stability	Stable for 3 months from receipt of products under proper storage and handling conditions.
Storage	Store at -80 centigrade. Avoid repeated freeze-thaw cycles.
Concentration	50 µg/mL as determined by BCA
Storage Buffer	100 mM glycine, 25 mM Tris-HCl, pH 7.3.

GENE INFORMATION

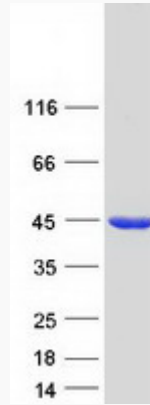
Gene Name	MVD mevalonate diphosphate decarboxylase [Homo sapiens (human)]
Official Symbol	MVD
Synonyms	MVD; mevalonate (diphospho) decarboxylase; diphosphomevalonate decarboxylase; mevalonate pyrophosphate decarboxylase; MPD; MDDase; mevalonatepyrophosphate decarboxylase; FP17780;
Gene ID	4597
mRNA Refseq	NM_002461
Protein Refseq	NP_002452
MIM	603236
UniProt ID	P53602

 Tel: 1-631-559-9269 1-516-512-3133

 Email: info@creative-biomart.com  Fax: 1-631-938-8127

 45-1 Ramsey Road, Shirley, NY 11967, USA

SDS-PAGE



 Tel: 1-631-559-9269 1-516-512-3133

 Email: info@creative-biomart.com  Fax: 1-631-938-8127

 45-1 Ramsey Road, Shirley, NY 11967, USA