

## Recombinant Human MX1 Protein (Glu366-Thr636), N-His tagged

Cat. No. MX1-4632H    Lot. No. (See product label)

### SPECIFICATION

<b>Product Overview</b>	Recombinant human MX1 (Glu366-Thr636) fused with the N-His tag was expressed in E. coli.
<b>Species</b>	Human
<b>Source</b>	E.coli
<b>ProteinLength</b>	Glu366-Thr636
<b>Form</b>	Lyophilized powder/frozen liquid
<b>Molecular Mass</b>	34.67 kDa
<b>Purity</b>	>90% as determined by SDS-PAGE.
<b>Notes</b>	For research use only.
<b>Storage</b>	Use a manual defrost freezer and avoid repeated freeze thaw cycles. Store at 2 to 8 centigrade for one week. Store at -20 to -80 centigrade for twelve months from the date of receipt.
<b>Storage Buffer</b>	0.01M PBS, pH 7.4, 0.02% NLS
<b>Reconstitution</b>	Reconstitute in sterile water for a stock solution.

 Tel: 1-631-559-9269    1-516-512-3133

 Email: [info@creative-biomart.com](mailto:info@creative-biomart.com)     Fax: 1-631-938-8127

 45-1 Ramsey Road, Shirley, NY 11967, USA

**Shipping** They are shipped out with dry ice/blue ice unless customers require otherwise.

## GENE INFORMATION

<b>Gene Name</b>	MX1 myxovirus (influenza virus) resistance 1, interferon-inducible protein p78 (mouse) [ Homo sapiens (human) ]
<b>Official Symbol</b>	MX1
<b>Synonyms</b>	MX1; myxovirus (influenza virus) resistance 1, interferon-inducible protein p78 (mouse); myxovirus (influenza) resistance 1, homolog of murine (interferon inducible protein p78); interferon-induced GTP-binding protein Mx1; IFI 78K; MxA; myxoma resistance protein 1; interferon-regulated resistance GTP-binding protein MxA; MX; IFI78; IFI-78K;
<b>Gene ID</b>	4599
<b>mRNA Refseq</b>	NM_001144925
<b>Protein Refseq</b>	NP_001138397
<b>MIM</b>	147150
<b>UniProt ID</b>	P20591

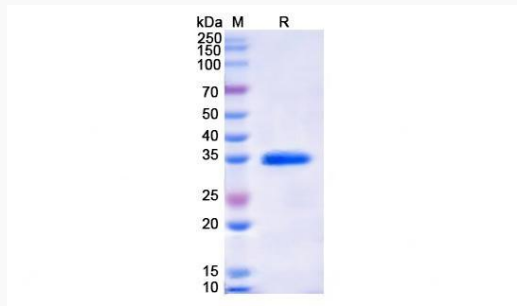
 Tel: 1-631-559-9269 1-516-512-3133

 Email: [info@creative-biomart.com](mailto:info@creative-biomart.com)  Fax: 1-631-938-8127

 45-1 Ramsey Road, Shirley, NY 11967, USA



SDS-PAGE



Tel: 1-631-559-9269 1-516-512-3133

Email: [info@creative-biomart.com](mailto:info@creative-biomart.com) Fax: 1-631-938-8127

45-1 Ramsey Road, Shirley, NY 11967, USA