

Recombinant Full Length Human MX1 Protein, C-Flag-tagged

Cat. No. MX1-646HFL Lot. No. (See product label)

SPECIFICATION

Product Overview	Recombinant Full Length Human MX1 Protein, fused to Flag-tag at C-terminus, was expressed in Mammalian cells.
Species	Human
Source	Mammalian Cells
Description	This gene encodes a guanosine triphosphate (GTP)-metabolizing protein that participates in the cellular antiviral response. The encoded protein is induced by type I and type II interferons and antagonizes the replication process of several different RNA and DNA viruses. There is a related gene located adjacent to this gene on chromosome 21, and there are multiple pseudogenes located in a cluster on chromosome 4. Alternative splicing results in multiple transcript variants.
Form	25 mM Tris HCl, pH 7.3, 100 mM glycine, 10% glycerol.
Molecular Mass	75.3 kDa
AA Sequence	MVVSEVDIAKADPAAASHPLLLNGDATVAQKNPGSVAENNLCSQYEEKVRPCIDLID SLRALGVEQDLAL PAIAVIGDQSSGKSSVLEALSGVALPRGSGIVTRCPLVLKLLKLV NEDKWRGKVSQDYIEISDASEVE KEINKAQNAIAGEGGMGISHELITLIESSRDVPD LTLIDLPGITRVAVGNQPADIGYKIKTLIKKYIQRQE TISLVVVPSNVDIATTEALSMAQ EVDPEGDRITIGILTKPDLVDKGTEDKVVDVVRNLVFHLKKGVMIVKC RGQQEIQDQL SLSEALQREKIFFENHPYFRDLLLEEGKATVPCLAELTSELITHICKSLPLENQIKETH QRITEELQKYGVDIPEDENEKMFLLIDKINAFNQDITALMQGEETVGEEDIRLFTRLRH

 Tel: 1-631-559-9269 1-516-512-3133

 Email: info@creative-biomart.com  Fax: 1-631-938-8127

 45-1 Ramsey Road, Shirley, NY 11967, USA

EFHKWSTIEN NFQEGHKILSRKIQKFENQYRGRELPGFVNYRTFETIVKQQIKALEE
 PAVDMLHTVTDMVRLAFTDVSİK NFEFFNLHRTAKSKIEDIRAEQEREKEKLIRLHF
 QMEQIVYCQDQVYRGALQKVREKELEEEKKKSWD FGAFQSSSATDSSMEEIFQH
 LMAYHQEASKRISSHIPLIQFFMLQTYGQQLQKAMLQLLQDKDITYSWLL
 KERSDTSĐKRKFLKERLARLTQARRRLAQFPGTRTRPLEQKLISEEDLAANDILDYKD
 DDDKV

Purity	> 80% as determined by SDS-PAGE and Coomassie blue staining.
Stability	Stable for 12 months from the date of receipt of the product under proper storage and handling conditions. Avoid repeated freeze-thaw cycles.
Storage	Store at -80 centigrade.
Concentration	>50 ug/mL as determined by microplate BCA method.
Preparation	Recombinant protein was captured through anti-DDK affinity column followed by conventional chromatography steps.
Protein Families	Druggable Genome
Full Length	Full L.

GENE INFORMATION

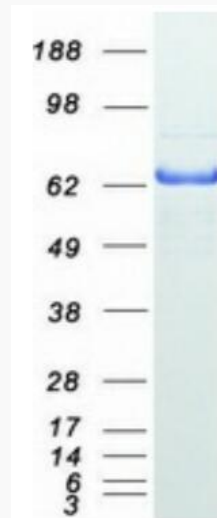
Gene Name	MX1 MX dynamin like GTPase 1 [Homo sapiens (human)]
Official Symbol	MX1
Synonyms	MX; MxA; IFI78; IFI-78K; IncMX1-215

 Tel: 1-631-559-9269 1-516-512-3133

 Email: info@creative-biomart.com  Fax: 1-631-938-8127

 45-1 Ramsey Road, Shirley, NY 11967, USA

Gene ID	4599
mRNA Refseq	NM_002462.5
Protein Refseq	NP_002453.2
MIM	147150
UniProt ID	P20591



Coomassie blue staining of purified MX1 protein.

Tel: 1-631-559-9269 1-516-512-3133

Email: info@creative-biomart.com Fax: 1-631-938-8127

45-1 Ramsey Road, Shirley, NY 11967, USA