

# Recombinant Human MXRA8 Protein, Myc/DDK-tagged, C13 and N15-labeled

Cat. No. MXRA8-3854H Lot. No. (See product label)

## SPECIFICATION

<b>Product Overview</b>	MXRA8 MS Standard C13 and N15-labeled recombinant protein (NP_115724) with a C-terminal MYC/DDK tag, was expressed in HEK293 cells.
<b>Species</b>	Human
<b>Source</b>	HEK293
<b>Description</b>	MXRA8 (Matrix Remodeling Associated 8) is a Protein Coding gene. Diseases associated with MXRA8 include Chikungunya and Ross River Fever. An important paralog of this gene is VSIG2.
<b>Molecular Mass</b>	49.1 kDa
<b>AA Sequence</b>	<p>MALPSRILLWKLVLQSSAVLLHSGSSVPAAAGSSVSESAVSWEAGARAVLRCQS            PRMVWTQDRLHQRVLRVLDLHDLRGPGGGPARRLLDLYSAGEQRVYEARDRGRLEL            SASAFDDGNFSLIRAVEETDAGLYTCNLHHHYCHLYESLAVRLEVTDGPPATPAYW            DGEKEVLAVARGAPALLTCVNRGHVWDRHVEEAQQVHVWDRQPPGVPHDRADR            LLDLYASGERRAYGPLFLRDRVAVGADAFERGFSLRIEPLVADEGTYSCHLHHHY            CGLHERRVFHLTVAEPHAEPPIRGSPGNGSSSHSGAPGPDPTLARGHNVINVIVPES            RAHFFQQLGYVLATLLLFILLVTVLLAARRRRGGYEYSQKSGKSKGKDVNLAEFA            VAAGDQMLYRSEDIQLDYKNNILKERAELAHSPLPAKYIDLKGFRENCKLEQKLIS            EEDLAANDILDYKDDDDKV</p>
<b>Purity</b>	> 80% as determined by SDS-PAGE and Coomassie blue staining

Tel: 1-631-559-9269 1-516-512-3133

Email: [info@creative-biomart.com](mailto:info@creative-biomart.com) Fax: 1-631-938-8127

45-1 Ramsey Road, Shirley, NY 11967, USA

<b>Stability</b>	Stable for 3 months from receipt of products under proper storage and handling conditions.
<b>Storage</b>	Store at -80 centigrade. Avoid repeated freeze-thaw cycles.
<b>Concentration</b>	50 µg/mL as determined by BCA
<b>Storage Buffer</b>	100 mM glycine, 25 mM Tris-HCl, pH 7.3.

## GENE INFORMATION

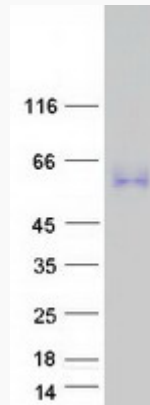
<b>Gene Name</b>	MXRA8 matrix remodeling associated 8 [ Homo sapiens (human) ]
<b>Official Symbol</b>	MXRA8
<b>Synonyms</b>	MXRA8; matrix remodeling associated 8; ASP3; matrix remodeling-associated protein 8; limitrin; matrix-remodeling-associated protein 8; matrix-remodelling associated 8
<b>Gene ID</b>	54587
<b>mRNA Refseq</b>	NM_032348
<b>Protein Refseq</b>	NP_115724
<b>MIM</b>	617293
<b>UniProt ID</b>	Q9BRK3

 Tel: 1-631-559-9269 1-516-512-3133

 Email: [info@creative-biomart.com](mailto:info@creative-biomart.com)  Fax: 1-631-938-8127

 45-1 Ramsey Road, Shirley, NY 11967, USA

**SDS-PAGE**



 Tel: 1-631-559-9269 1-516-512-3133

 Email: [info@creative-biomart.com](mailto:info@creative-biomart.com)  Fax: 1-631-938-8127

 45-1 Ramsey Road, Shirley, NY 11967, USA