

Recombinant Human MYBBP1A Protein, GST-tagged

Cat. No. MYBBP1A-5779H Lot. No. (See product label)

SPECIFICATION

Product Overview	Human MYBBP1A partial ORF (NP_055335, 1231 a.a. - 1326 a.a.) recombinant protein with GST-tag at N-terminal.
Species	Human
Source	Wheat Germ
Description	This gene encodes a nucleolar transcriptional regulator that was first identified by its ability to bind specifically to the Myb proto-oncogene protein. The encoded protein is thought to play a role in many cellular processes including response to nucleolar stress, tumor suppression and synthesis of ribosomal DNA. Alternate splicing results in multiple transcript variants. [provided by RefSeq, Sep 2013]
Molecular Mass	36.3 kDa
AA Sequence	KSPAPGAPTRSPSTPAKSPKLQKKNQKPSQVNGAPGSPTEPAGQKQHQAALPKKG VLGKSPLSALARKKARLSLVIRSPSLLQSGAKKKAQVRKAG
Applications	Enzyme-linked Immunoabsorbent Assay Western Blot (Recombinant protein) Antibody Production Protein Array
Notes	Best use within three months from the date of receipt of this protein.

 Tel: 1-631-559-9269 1-516-512-3133

 Email: info@creative-biomart.com  Fax: 1-631-938-8127

 45-1 Ramsey Road, Shirley, NY 11967, USA

Storage Store at -80 centigrade. Aliquot to avoid repeated freezing and thawing.

Storage Buffer 50 mM Tris-HCl, 10 mM reduced Glutathione, pH=8.0 in the elution buffer.

GENE INFORMATION

Gene Name MYBBP1A MYB binding protein (P160) 1a [Homo sapiens]

Official Symbol MYBBP1A

Synonyms MYBBP1A; MYB binding protein (P160) 1a; myb-binding protein 1A; FLJ37886; p53 activated protein 2; P160; PAP2; p53-activated protein-2;

Gene ID 10514

mRNA Refseq NM_001105538

Protein Refseq NP_001099008

MIM 604885

UniProt ID Q9BQG0

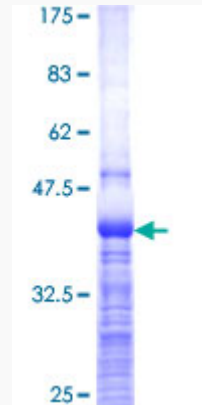
 Tel: 1-631-559-9269 1-516-512-3133

 Email: info@creative-biomart.com  Fax: 1-631-938-8127

 45-1 Ramsey Road, Shirley, NY 11967, USA

Quality Control

Testing:



12.5% SDS-PAGE Stained with Coomassie Blue.

 Tel: 1-631-559-9269 1-516-512-3133

 Email: info@creative-biomart.com  Fax: 1-631-938-8127

 45-1 Ramsey Road, Shirley, NY 11967, USA