

Recombinant Human MYBL1 Protein, GST-tagged

Cat. No. MYBL1-5780H Lot. No. (See product label)

SPECIFICATION

Product Overview	Human MYBL1 partial ORF (XP_034274, 625 a.a. - 734 a.a.) recombinant protein with GST-tag at N-terminal.
Species	Human
Source	Wheat Germ
Description	MYBL1 (MYB Proto-Oncogene Like 1) is a Protein Coding gene. Diseases associated with MYBL1 include Burkitt Lymphoma. Among its related pathways are Mitotic Prophase and Gene Expression. GO annotations related to this gene include chromatin binding and transcriptional activator activity, RNA polymerase II core promoter proximal region sequence-specific binding. An important paralog of this gene is MYB.
Molecular Mass	37.84 kDa
AA Sequence	KSLVLDNWEKEESGTQLLTEDISDMQSENRFSTLLMIPLLEIHDNRCNLIPEKQDINS TNKTYTLTKKPNPNTSKVVKLEKNLQSNCEWETVVYVKTEDQLIMTEQAR
Applications	Enzyme-linked Immunoabsorbent Assay Western Blot (Recombinant protein) Antibody Production Protein Array
Notes	Best use within three months from the date of receipt of this protein.

 Tel: 1-631-559-9269 1-516-512-3133

 Email: info@creative-biomart.com  Fax: 1-631-938-8127

 45-1 Ramsey Road, Shirley, NY 11967, USA

Storage Store at -80 centigrade. Aliquot to avoid repeated freezing and thawing.

Storage Buffer 50 mM Tris-HCl, 10 mM reduced Glutathione, pH=8.0 in the elution buffer.

GENE INFORMATION

Gene Name MYBL1 v-myb myeloblastosis viral oncogene homolog (avian)-like 1 [Homo sapiens]

Official Symbol MYBL1

Synonyms MYBL1; v-myb myeloblastosis viral oncogene homolog (avian)-like 1; v myb avian myeloblastosis viral oncogene homolog like 1; myb-related protein A; A myb; AMYB; myb-like protein 1; v-myb avian myeloblastosis viral oncogene homolog-like 1; A-MYB; MGC120059; MGC120061;

Gene ID 4603

mRNA Refseq NM_001080416

Protein Refseq NP_001073885

MIM 159405

UniProt ID P10243

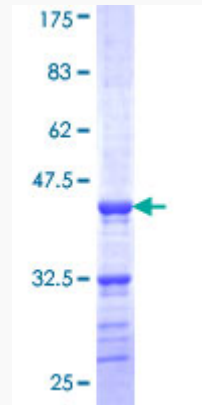
 Tel: 1-631-559-9269 1-516-512-3133

 Email: info@creative-biomart.com  Fax: 1-631-938-8127

 45-1 Ramsey Road, Shirley, NY 11967, USA

Quality Control

Testing:



12.5% SDS-PAGE Stained with Coomassie Blue.

 Tel: 1-631-559-9269 1-516-512-3133

 Email: info@creative-biomart.com  Fax: 1-631-938-8127

 45-1 Ramsey Road, Shirley, NY 11967, USA