

## Recombinant Human MYBPC3 Protein, His-SUMO-tagged

Cat. No. MYBPC3-1289H Lot. No. (See product label)

### SPECIFICATION

<b>Product Overview</b>	Recombinant Human MYBPC3 Protein (1-328aa) was expressed in E. coli with N-terminal His-SUMO tag.
<b>Species</b>	Human
<b>Source</b>	E.coli
<b>ProteinLength</b>	1-328 a.a.
<b>Form</b>	Tris-based buffer, 50% glycerol.
<b>Molecular Mass</b>	50.8 kDa
<b>AA Sequence</b>	MPEPGKKPVSAFSKKPRSVVEVAAGSPAVFEAETERAGVKVRWQRGGSDISASNKY GLATEGTRHRTLTVREVGPADQGSYAVIAGSSKVKFDLKVIEAEKAEPMLAPAPAPAE ATGAPGEAPAPAAELGESAPSPKGSSSAALNGPTPGAPDDPIGLFVMRPQDGEVTV GGSITFSARVAGASLLKPPVVKWFKGKWVDLSSKVGQHLQLHDSYDRASKVYLFEL HITDAQPAFTGSYRCEVSTKDKFDCSNFNLTVHEAMGTGDLDLLSAFRRTSLAGGG RRISDSHEDTGILDFSSLLKKRDSFRTPRDSKLEAPAEEDVWEILRQA
<b>Purity</b>	Greater than 90% as determined by SDS-PAGE.
<b>Storage</b>	The shelf life of liquid form is 6 months at -20 centigrade/-80 centigrade. The shelf life of lyophilized form is 12 months at -20 centigrade/-80 centigrade.

 Tel: 1-631-559-9269 1-516-512-3133

 Email: [info@creative-biomart.com](mailto:info@creative-biomart.com)  Fax: 1-631-938-8127

 45-1 Ramsey Road, Shirley, NY 11967, USA

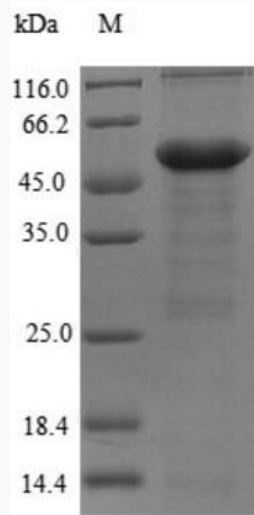
**GENE INFORMATION**

<b>Gene Name</b>	MYBPC3 myosin binding protein C, cardiac [ Homo sapiens ]
<b>Official Symbol</b>	MYBPC3
<b>Synonyms</b>	MYBPC3; myosin binding protein C, cardiac; CMH4, myosin binding protein C, cardiac; myosin-binding protein C, cardiac-type; FHC; MYBP C; C-protein, cardiac muscle isoform; myosin-binding protein C, cardiac; CMH4; MYBP-C; DKFZp779E1762
<b>Gene ID</b>	4607
<b>mRNA Refseq</b>	NM_000256
<b>Protein Refseq</b>	NP_000247
<b>MIM</b>	600958
<b>UniProt ID</b>	Q14896

 Tel: 1-631-559-9269 1-516-512-3133

 Email: [info@creative-biomart.com](mailto:info@creative-biomart.com)  Fax: 1-631-938-8127

 45-1 Ramsey Road, Shirley, NY 11967, USA



Tel: 1-631-559-9269 1-516-512-3133

Email: [info@creative-biomart.com](mailto:info@creative-biomart.com) Fax: 1-631-938-8127

45-1 Ramsey Road, Shirley, NY 11967, USA