

Recombinant Human MYBPC3 Protein (Met1-Ala328), N-His tagged

Cat. No. MYBPC3-4636H Lot. No. (See product label)

SPECIFICATION

Product Overview	Recombinant human MYBPC3 (Met1-Ala328) fused with the N-His tag was expressed in E. coli.
Species	Human
Source	E.coli
ProteinLength	Met1-Ala328
Form	Lyophilized powder/frozen liquid
Molecular Mass	37.13 kDa
Purity	>90% as determined by SDS-PAGE.
Notes	For research use only.
Storage	Use a manual defrost freezer and avoid repeated freeze thaw cycles. Store at 2 to 8 centigrade for one week. Store at -20 to -80 centigrade for twelve months from the date of receipt.
Storage Buffer	0.01M PBS, pH 7.4, 0.02% NLS
Reconstitution	Reconstitute in sterile water for a stock solution.

 Tel: 1-631-559-9269 1-516-512-3133

 Email: info@creative-biomart.com  Fax: 1-631-938-8127

 45-1 Ramsey Road, Shirley, NY 11967, USA

Shipping They are shipped out with dry ice/blue ice unless customers require otherwise.

GENE INFORMATION

Gene Name MYBPC3 myosin binding protein C, cardiac [Homo sapiens (human)]

Official Symbol MYBPC3

Synonyms MYBPC3; myosin binding protein C, cardiac; CMH4, myosin binding protein C, cardiac; myosin-binding protein C, cardiac-type; FHC; MYBP C; C-protein, cardiac muscle isoform; myosin-binding protein C, cardiac; CMH4; MYBP-C; DKFZp779E1762;

Gene ID 4607

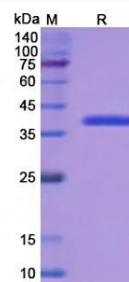
mRNA Refseq NM_000256

Protein Refseq NP_000247

MIM 600958

UniProt ID Q14896

SDS-PAGE



Tel: 1-631-559-9269 1-516-512-3133

Email: info@creative-biomart.com Fax: 1-631-938-8127

45-1 Ramsey Road, Shirley, NY 11967, USA