

Recombinant Human MYBPC3 Protein, Myc/DDK-tagged, C13 and N15-labeled

Cat. No. MYBPC3-943H **Lot. No.** (See product label)

SPECIFICATION

Product Overview	MYBPC3 MS Standard C13 and N15-labeled recombinant protein (NP_000247) with a C-terminal MYC/DDK tag, was expressed in HEK293 cells.
Species	Human
Source	HEK293
Description	MYBPC3 encodes the cardiac isoform of myosin-binding protein C. Myosin-binding protein C is a myosin-associated protein found in the cross-bridge-bearing zone (C region) of A bands in striated muscle. MYBPC3, the cardiac isoform, is expressed exclusively in heart muscle. Regulatory phosphorylation of the cardiac isoform in vivo by cAMP-dependent protein kinase (PKA) upon adrenergic stimulation may be linked to modulation of cardiac contraction. Mutations in MYBPC3 are one cause of familial hypertrophic cardiomyopathy.
Molecular Mass	140.8 kDa
AA Sequence	MPEPGKKPVSAFSSKPRSVVEVAAGSPAVFEAETERAGVKVVRWQRGGSDISASNKY GLATEGTRHTLTVREVGPADQGSYAVIAGSSKVKFDLKVIEAEKAEPMLAPAPAPAE ATGAPGEAPAPAAELGESAPSPKGSSSAALNGPTPGAPDDPIGLFVMRPQDGEVTV GGSITFSARVAGASLLKPPVVKWFKGKWVDLSSKVGQHLQLHDSYDRASKVYLFEL HITDAQPAFTGSYRCEVSTKDKFDCSNFNLTVHEAMGTGDLDLLSAFRRTSLAGGG RRISDSHEDTGILDFSSLLKKRDSFRTPRDSKLEAPAEEDVWEILRQAPPSEYERIAF

 Tel: 1-631-559-9269 1-516-512-3133

 Email: info@creative-biomart.com  Fax: 1-631-938-8127

 45-1 Ramsey Road, Shirley, NY 11967, USA

QYGVTDLRGMLKRLKGMRRDEKKSTAFQKKLEPAYQVSKGHKIRLTVELADHDAEV
 KWLKNGQEIQMSGSKYIFESIGAKRRTLISQCSSLADDAAYQCVVGGKECSTELFVKE
 PPVLITRPLEDQLVMVGQRVEFECEVSEEGAQVKWLKDGVELTREETFKYRFKKDG
 QRHHLIINEAMLEDAGHYALCTSGGQALAEIVQEKKLEVYQSIADLMVGAKDQAVF
 KCEVSDENVRGVWLKNGKELVPDSRIKVSHIGRVHKLTTIDVTPADEADYSFVPEGF
 ACNLSAKLHFMEVKIDFVPRQEPPKIHLDPCGRIPDTIVVAGNKLRLDVPISGDPAPT
 VIWQKAITQGNKAPARPAPDAPEDTGDSDEWVFDKLLCETEGRVRVETTKDRSIFT
 VEGAKEDEGVYTVTKNPVGEDQVNLTVKVIDVPDAPAAPKISNVGEDSCTVQWE
 PPAYDGGQPILGYILERKKKKSyrWMLNFDLIQELSHEARRMIEGVVYEMRVYAVN
 AIGMSRPSPASQPFMPIGPPSEPTHLAVEDVSDTTVSLKWRPPERVGAGGLDGYSV
 EYCPEGCSEWVAALQGLTEHTSILVKDLPTGARLLFRVRAHNMAGPGAPVTTTEPV
 TVQEILQRPRQLPRHLRQTIQKKVGEVNVLLIPFQGKPRPQVTWTKEGQPLAGEEV
 SIRNSPTDILFIRAARRVHSGTYQVTVRIENMEDKATLVLQVVDPKSPQQDLRVTD
 WGLNVALEWKPPQDVGNTLWGYTVQKADKKTMEWFTVLEHYRRTHCVPELIIG
 NGYYFRVFSQNMVGFSDRAATTKEPVFIPRPGITYEPPNYKALDFSEAPSFTQPLVN
 RSVIAGYTAMLCCA VRGSPKPKISWFKNGLDLGEDARFRMFSKQGVLTLEIRKPCPF
 DGGIYVC RATNLQGEARCECRLEVRVPQTRTRPLEQKLISEEDLAANDILDYKDDDD
 KV

Purity	> 80% as determined by SDS-PAGE and Coomassie blue staining
Stability	Stable for 3 months from receipt of products under proper storage and handling conditions.
Storage	Store at -80 centigrade. Avoid repeated freeze-thaw cycles.
Concentration	50 µg/mL as determined by BCA
Storage Buffer	100 mM glycine, 25 mM Tris-HCl, pH 7.3.

 Tel: 1-631-559-9269 1-516-512-3133

 Email: info@creative-biomart.com  Fax: 1-631-938-8127

 45-1 Ramsey Road, Shirley, NY 11967, USA

GENE INFORMATION

Gene Name MYBPC3 myosin binding protein C3 [Homo sapiens (human)]

Official Symbol MYBPC3

Synonyms MYBPC3; myosin binding protein C, cardiac; CMH4, myosin binding protein C, cardiac; myosin-binding protein C, cardiac-type; FHC; MYBP C; C-protein, cardiac muscle isoform; myosin-binding protein C, cardiac; CMH4; MYBP-C; DKFZp779E1762;

Gene ID 4607

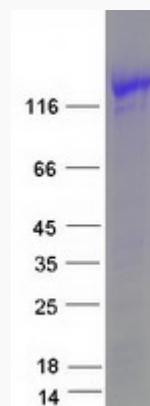
mRNA Refseq NM_000256

Protein Refseq NP_000247

MIM 600958

UniProt ID Q14896

SDS-PAGE



 Tel: 1-631-559-9269 1-516-512-3133

 Email: info@creative-biomart.com  Fax: 1-631-938-8127

 45-1 Ramsey Road, Shirley, NY 11967, USA