

Recombinant Human MYCL1 Protein, GST-tagged

Cat. No. MYCL1-5791H Lot. No. (See product label)

SPECIFICATION

Product Overview	Human MYCL1 full-length ORF (NP_005367.1, 1 a.a. - 206 a.a.) recombinant protein with GST-tag at N-terminal.
Species	Human
Source	Wheat Germ
Description	MYCL (MYCL Proto-Oncogene, BHLH Transcription Factor) is a Protein Coding gene. Diseases associated with MYCL include Apocrine Adenosis Of Breast and Lower Lip Cancer. GO annotations related to this gene include transcription factor activity, sequence-specific DNA binding and protein dimerization activity. An important paralog of this gene is MYCN.
Molecular Mass	48.2 kDa
AA Sequence	MDYDSYQHYFYDYDCGEDFYRSTAPSEDIWKKFELVPSPTSPPWGLGPGAGDPA PGIGPPEPWPGGCTGDEAESRGHSGWGRNYASIIRDCMWSGFSARERLERAVS DRLAPGAPRGNPPKASAAPDCTPSLEAGNPAPAAPCPLGEPKTQACSGSESPSDS GKDLPEPSKRGPPHGWPCLKPCLRSGIGSSQALGPSPLFG
Applications	Enzyme-linked Immunoabsorbent Assay Western Blot (Recombinant protein) Antibody Production Protein Array

 Tel: 1-631-559-9269 1-516-512-3133

 Email: info@creative-biomart.com  Fax: 1-631-938-8127

 45-1 Ramsey Road, Shirley, NY 11967, USA

Notes	Best use within three months from the date of receipt of this protein.
Storage	Store at -80 centigrade. Aliquot to avoid repeated freezing and thawing.
Storage Buffer	50 mM Tris-HCl, 10 mM reduced Glutathione, pH=8.0 in the elution buffer.

GENE INFORMATION

Gene Name	MYCL1 v-myc myelocytomatosis viral oncogene homolog 1, lung carcinoma derived (avian) [Homo sapiens]
Official Symbol	MYCL1
Synonyms	MYCL1; v-myc myelocytomatosis viral oncogene homolog 1, lung carcinoma derived (avian); MYCL, v myc avian myelocytomatosis viral oncogene homolog 1, lung carcinoma derived; protein L-Myc-1; bHLHe38; l myc protein; LMYC; myc related gene from lung cancer; oncogene lmyc; l-myc-1 proto-oncogene; myc-related gene from lung cancer; class E basic helix-loop-helix protein 38; MYCL;
Gene ID	4610
mRNA Refseq	NM_001033081
Protein Refseq	NP_001028253
MIM	164850
UniProt ID	P12524

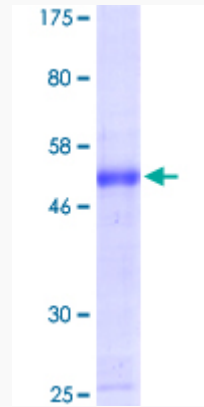
 Tel: 1-631-559-9269 1-516-512-3133

 Email: info@creative-biomart.com  Fax: 1-631-938-8127

 45-1 Ramsey Road, Shirley, NY 11967, USA

Quality Control

Testing:



12.5% SDS-PAGE Stained with Coomassie Blue.

 Tel: 1-631-559-9269 1-516-512-3133

 Email: info@creative-biomart.com  Fax: 1-631-938-8127

 45-1 Ramsey Road, Shirley, NY 11967, USA