

## Recombinant Human MYCL1 protein, GST-tagged

Cat. No. MYCL1-7843H Lot. No. (See product label)

### SPECIFICATION

<b>Product Overview</b>	Recombinant Human MYCL1 protein(106-165 aa), fused with N-terminal GST tag, was expressed in E. coli.
<b>Species</b>	Human
<b>Source</b>	E.coli
<b>ProteinLength</b>	106-165 aa
<b>Form</b>	The purified protein was Lyophilized from sterile PBS (58mM Na <sub>2</sub> HPO <sub>4</sub> , 17mM NaH <sub>2</sub> PO <sub>4</sub> , 68mM NaCl, pH7.4). 5 % trehalose and 5 % mannitol are added as protectant before lyophilization.
<b>Storage</b>	Short-term storage: Store at 2-8°C for (1-2 weeks). Long-term storage: Aliquot and store at -20°C to -80°C for up to 3 months, reconstitution with sterile water and addition of an equal volume of glycerol. Avoid repeat freeze-thaw cycles.
<b>AA Sequence</b>	ERAVSDRLAPGAPRGNPPKASAAPDCTPSLEAGNPAPAAPCPLGEPKTQACSGSE SPSDS
<b>Purity</b>	85%, by SDS-PAGE with Coomassie Brilliant Blue staining.

### GENE INFORMATION

<b>Official Symbol</b>	MYCL1
------------------------	-------

 Tel: 1-631-559-9269 1-516-512-3133

 Email: [info@creative-biomart.com](mailto:info@creative-biomart.com)  Fax: 1-631-938-8127

 45-1 Ramsey Road, Shirley, NY 11967, USA

**Synonyms** MYCL1; v-myc myelocytomatosis viral oncogene homolog 1, lung carcinoma derived (avian); MYCL, v myc avian myelocytomatosis viral oncogene homolog 1, lung carcinoma derived; protein L-Myc-1; bHLHe38; l myc protein; LMYC; myc related gene from lung cancer; oncogene lmyc; l-myc-1 proto-oncogene; myc-related gene from lung cancer; class E basic helix-loop-helix protein 38; MYCL;

**Gene ID** 4610

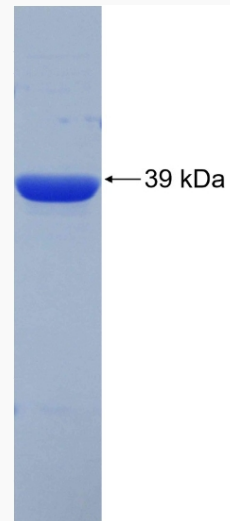
**mRNA Refseq** NM\_001033081

**Protein Refseq** NP\_001028253

**MIM** 164850

**UniProt ID** P12524

**SDS-PAGE**



 Tel: 1-631-559-9269 1-516-512-3133

 Email: [info@creative-biomart.com](mailto:info@creative-biomart.com)  Fax: 1-631-938-8127

 45-1 Ramsey Road, Shirley, NY 11967, USA