

Recombinant Human MYD88 Protein, His tagged

Cat. No. MYD88-1550H Lot. No. (See product label)

SPECIFICATION

Product Overview	Recombinant Human MYD88 protein with His tag was expressed in E. coli.
Species	Human
Source	E.coli
ProteinLength	176-280 aa
Description	This gene encodes a cytosolic adapter protein that plays a central role in the innate and adaptive immune response. This protein functions as an essential signal transducer in the interleukin-1 and Toll-like receptor signaling pathways. These pathways regulate that activation of numerous proinflammatory genes. The encoded protein consists of an N-terminal death domain and a C-terminal Toll-interleukin1 receptor domain. Patients with defects in this gene have an increased susceptibility to pyogenic bacterial infections. Alternate splicing results in multiple transcript variants.
Form	Liquid
Molecular Mass	15 kDa (Calculated)
Purity	~95%
Applications	ELISA, WB
Storage	Store in working aliquots at -70 centigrade. Avoid freeze/thaw cycles. When working

 Tel: 1-631-559-9269 1-516-512-3133

 Email: info@creative-biomart.com  Fax: 1-631-938-8127

 45-1 Ramsey Road, Shirley, NY 11967, USA

with proteins care should be taken to keep recombinant protein at a cool and stable temperature.

Storage Buffer 1X PBS containing 0.1% SDS and 0.02% NaN₃

GENE INFORMATION

Gene Name MYD88 myeloid differentiation primary response gene (88) [Homo sapiens (human)]

Official Symbol MYD88

Synonyms MYD88; myeloid differentiation primary response gene (88); myeloid differentiation primary response protein MyD88; MYD88D;

Gene ID 4615

mRNA Refseq NM_001172566

Protein Refseq NP_001166037

MIM 602170

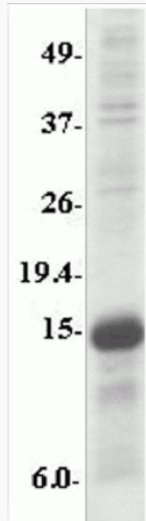
UniProt ID Q99836

 Tel: 1-631-559-9269 1-516-512-3133

 Email: info@creative-biomart.com  Fax: 1-631-938-8127

 45-1 Ramsey Road, Shirley, NY 11967, USA

SDS-PAGE and WB



 Tel: 1-631-559-9269 1-516-512-3133

 Email: info@creative-biomart.com  Fax: 1-631-938-8127

 45-1 Ramsey Road, Shirley, NY 11967, USA