

## Recombinant Human MYD88 protein, His-tagged

**Cat. No.** MYD88-301138H    **Lot. No.** (See product label)

### SPECIFICATION

<b>Product Overview</b>	Recombinant Human MYD88 protein(1-150 aa), fused with N-terminal His tag, was expressed in E. coli.
<b>Species</b>	Human
<b>Source</b>	E.coli
<b>ProteinLength</b>	1-150 aa
<b>Form</b>	The purified protein was Lyophilized from sterile PBS (58mM Na <sub>2</sub> HPO <sub>4</sub> , 17mM NaH <sub>2</sub> PO <sub>4</sub> , 68mM NaCl, pH7.4). 5 % trehalose and 5 % mannitol are added as protectant before lyophilization. The elution buffer contain 300mM imidazole.
<b>Purity</b>	85%, by SDS-PAGE with Coomassie Brilliant Blue staining.
<b>Storage</b>	Short-term storage: Store at 2-8°C for (1-2 weeks). Long-term storage: Aliquot and store at -20°C to -80°C for up to 3 months, reconstitution with sterile water and addition of an equal volume of glycerol. Avoid repeat freeze-thaw cycles.
<b>Reconstitution</b>	Reconstitute at 0.25 µg/µl in 200 µl sterile water for short-term storage. After reconstitution with sterile water, if glycerol has no effect on subsequent experiments, it is recommended to add an equal volume of glycerol for long-term storage.
<b>AA Sequence</b>	MAAGGPGAGSAAPVSSTSSLPLAALNMRVRRRLSLFLNVRTQVAADWTALAEEMD

 Tel: 1-631-559-9269    1-516-512-3133

 Email: [info@creative-biomart.com](mailto:info@creative-biomart.com)     Fax: 1-631-938-8127

 45-1 Ramsey Road, Shirley, NY 11967, USA

FEYLEIRQLETQADPTGRLLDAWQGRPGASVGRLELLTKLGRDDVLELGPSIEED  
CQKYILKQQQEEAEKPLQVAAVDSSVPRTAELAGITTL

## GENE INFORMATION

<b>Gene Name</b>	MYD88 myeloid differentiation primary response gene (88) [ Homo sapiens ]
<b>Official Symbol</b>	MYD88
<b>Synonyms</b>	MYD88; myeloid differentiation primary response gene (88); myeloid differentiation primary response protein MyD88; MYD88D;
<b>Gene ID</b>	4615
<b>mRNA Refseq</b>	NM_001172566
<b>Protein Refseq</b>	NP_001166037
<b>MIM</b>	602170
<b>UniProt ID</b>	Q99836

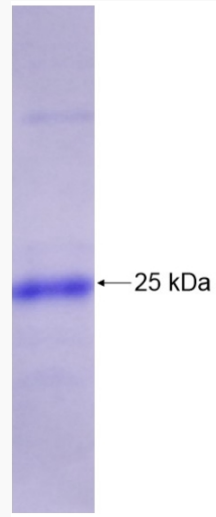
 Tel: 1-631-559-9269 1-516-512-3133

 Email: [info@creative-biomart.com](mailto:info@creative-biomart.com)  Fax: 1-631-938-8127

 45-1 Ramsey Road, Shirley, NY 11967, USA



SDS-PAGE



Tel: 1-631-559-9269 1-516-512-3133

Email: [info@creative-biomart.com](mailto:info@creative-biomart.com) Fax: 1-631-938-8127

45-1 Ramsey Road, Shirley, NY 11967, USA