

Recombinant Full Length Human MYD88 Protein, C-Flag-tagged

Cat. No. MYD88-687HFL **Lot. No.** (See product label)

SPECIFICATION

Product Overview	Recombinant Full Length Human MYD88 Protein, fused to Flag-tag at C-terminus, was expressed in Mammalian cells.
Species	Human
Source	Mammalian Cells
Description	This gene encodes a cytosolic adapter protein that plays a central role in the innate and adaptive immune response. This protein functions as an essential signal transducer in the interleukin-1 and Toll-like receptor signaling pathways. These pathways regulate that activation of numerous proinflammatory genes. The encoded protein consists of an N-terminal death domain and a C-terminal Toll-interleukin1 receptor domain. Patients with defects in this gene have an increased susceptibility to pyogenic bacterial infections. Alternate splicing results in multiple transcript variants.
Form	25 mM Tris HCl, pH 7.3, 100 mM glycine, 10% glycerol.
Molecular Mass	33.1 kDa
AA Sequence	MAAGGPGAGSAAPVSSTSSLPLAALNMRVRRRLSLFLNVRTQVAADWTALAEEMD FEYLEIRQLETQADP TGRLLDAWQGRPGASVGRLLLELLTKLGRDDVLELGPSEED CQKYILKQQQEEAEKPLQVAAVDSSVPR TAELAGITLDDPLGHMPERFDAFICYCP SDIQFVQEMIRQLEQTNYRLKLCVSDRDVLPGTCVWSIASE LIEKRCRRMVVVSDD YLQSKECDFQTKFALSLSPGAHQKRLIPIKYKAMKKEFPSILRFITVCDYTNPC

 Tel: 1-631-559-9269 1-516-512-3133

 Email: info@creative-biomart.com  Fax: 1-631-938-8127

 45-1 Ramsey Road, Shirley, NY 11967, USA

TKSWFWTRLAKALSLPTRTRPLEQKLISEEDLAANDILDYKDDDDKV

Purity > 80% as determined by SDS-PAGE and Coomassie blue staining.

Stability Stable for 12 months from the date of receipt of the product under proper storage and handling conditions. Avoid repeated freeze-thaw cycles.

Storage Store at -80 centigrade.

Concentration >50 ug/mL as determined by microplate BCA method.

Preparation Recombinant protein was captured through anti-DDK affinity column followed by conventional chromatography steps.

Protein Families Druggable Genome

Protein Pathways Apoptosis, Toll-like receptor signaling pathway

Full Length Full L.

GENE INFORMATION

Gene Name MYD88 MYD88 innate immune signal transduction adaptor [Homo sapiens (human)]

Official Symbol MYD88

Synonyms IMD68; MYD88D

Gene ID 4615

mRNA Refseq NM_002468.5

 Tel: 1-631-559-9269 1-516-512-3133

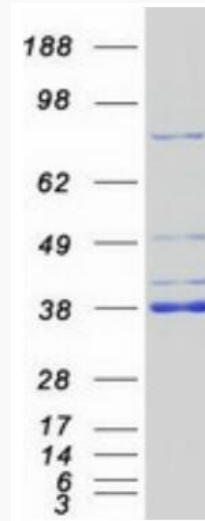
 Email: info@creative-biomart.com  Fax: 1-631-938-8127

 45-1 Ramsey Road, Shirley, NY 11967, USA

Protein Refseq NP_002459.3

MIM 602170

UniProt ID Q99836



Coomassie blue staining of purified MYD88 protein.

 Tel: 1-631-559-9269 1-516-512-3133

 Email: info@creative-biomart.com  Fax: 1-631-938-8127

 45-1 Ramsey Road, Shirley, NY 11967, USA