

## Recombinant Human MYF6 Protein, GST-tagged

**Cat. No.** MYF6-5801H    **Lot. No.** (See product label)

### SPECIFICATION

<b>Product Overview</b>	Human MYF6 full-length ORF ( NP_002460.1, 1 a.a. - 242 a.a.) recombinant protein with GST-tag at N-terminal.
<b>Species</b>	Human
<b>Source</b>	Wheat Germ
<b>Description</b>	The protein encoded by this gene is a probable basic helix-loop-helix (bHLH) DNA binding protein involved in muscle differentiation. The encoded protein likely acts as a heterodimer with another bHLH protein. Defects in this gene are a cause of autosomal dominant centronuclear myopathy (ADCNM). [provided by RefSeq, May 2010]
<b>Molecular Mass</b>	53.4 kDa
<b>AA Sequence</b>	MMMDLFETGSYFFYLDGENVTLQPLEVAEGSPLYPGSDGTLSPCQDQMPPEAGSD SSGEEHVLAPPGLQPPHCPGQCLIWACKTCKRKSAPTDRRKAATLRERRRLKKINE AFEALKRRTVANPNQRLPKVEILRSAISYIERLQDLLHRLDQQEKMQELGVDPFSYRP KQENLEGADFLRTCSSQWPSVSDHSRGLVITAKEGGASIDSSASSSLRCLSSIVDSIS SEERKLPCVEEVVEK
<b>Applications</b>	Enzyme-linked Immunoabsorbent Assay Western Blot (Recombinant protein) Antibody Production Protein Array

 Tel: 1-631-559-9269    1-516-512-3133

 Email: [info@creative-biomart.com](mailto:info@creative-biomart.com)     Fax: 1-631-938-8127

 45-1 Ramsey Road, Shirley, NY 11967, USA

<b>Notes</b>	Best use within three months from the date of receipt of this protein.
<b>Storage</b>	Store at -80 centigrade. Aliquot to avoid repeated freezing and thawing.
<b>Storage Buffer</b>	50 mM Tris-HCl, 10 mM reduced Glutathione, pH=8.0 in the elution buffer.

## GENE INFORMATION

<b>Gene Name</b>	MYF6 myogenic factor 6 (herculin) [ Homo sapiens ]
<b>Official Symbol</b>	MYF6
<b>Synonyms</b>	MYF6; myogenic factor 6 (herculin); myogenic factor 6; bHLHc4; MRF4; muscle-specific regulatory factor 4; class C basic helix-loop-helix protein 4; CNM3; myf-6;
<b>Gene ID</b>	4618
<b>mRNA Refseq</b>	NM_002469
<b>Protein Refseq</b>	NP_002460
<b>MIM</b>	159991
<b>UniProt ID</b>	P23409

 Tel: 1-631-559-9269 1-516-512-3133

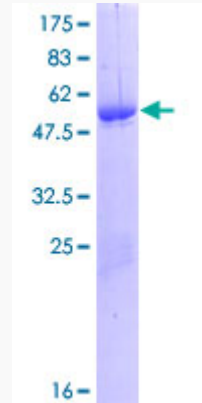
 Email: [info@creative-biomart.com](mailto:info@creative-biomart.com)  Fax: 1-631-938-8127

 45-1 Ramsey Road, Shirley, NY 11967, USA



**Quality Control**

**Testing:**



12.5% SDS-PAGE Stained with Coomassie Blue.

Tel: 1-631-559-9269 1-516-512-3133

Email: [info@creative-biomart.com](mailto:info@creative-biomart.com) Fax: 1-631-938-8127

45-1 Ramsey Road, Shirley, NY 11967, USA