

Recombinant Human MYH6 Protein (160-816 aa), His-tagged

Cat. No. MYH6-1469H Lot. No. (See product label)

SPECIFICATION

Product Overview Recombinant Human MYH6 Protein (160-816 aa) is produced by Yeast expression system. This protein is fused with a 6xHis tag at the N-terminal. Research Area: Signal Transduction. Protein Description: Partial.

Species Human

Source Yeast

ProteinLength 160-816 aa

Description Muscle contraction.

Form Tris-based buffer, 50% glycerol

Molecular Mass 76.8 kDa

AA Sequence

NAYQYMLTDRENQSILITGESGAGKTVNTRVIQYFASIAAIGDRGKKDNANANKGTL
 EDQIIQANPALEAFGNACTVRNDNSSRFGKFIHFGATGKGLASADIETYLLEKSRVIF
 QLKAERNYHIFYQILSNKKPELLDMLLVNPNPYDYAFVSQGEVSVASIDDSEELMATD
 SAFDVLGFTSEEKAGVYKLTGAIMHYGNMFKKQKQREEQAEPDGTEDADKSAYLM
 GLNSADLLKGLCHPRVKVGNEYVTKGQSVQQVYYSIGALAKAVYEKMFNWMVTRIN
 ATLETQPRQYFIGVLDIAGFEIFDFNSFEQLCINFTNEKLQQFFNHHMFVLEQEEYK
 KEGIEWTFIDFGMDLQACIDLIEKPMGIMSILEEECMFPKATDMTFKAKLYDNHLGKS
 NNFQKPRNIKGKQEAHFSLIHYAGTVDYNILGWLEKNKDPLNETVVALYQKSSLKLM
 ATLFSSYATADTGDGSGKSKGGKGGSSFQTVSALHRENLNKLMNTLRTTTHPHFVRCI

 Tel: 1-631-559-9269 1-516-512-3133

 Email: info@creative-biomart.com  Fax: 1-631-938-8127

 45-1 Ramsey Road, Shirley, NY 11967, USA

IPNERKAPGVMDNPLVMHQLRCNGVLEGIRICRKGFPNRILYGDFRQRYRILNPVAIP
EGQFIDSRKGTAKLLSSLDIDHNQYKFGHTKVFFKAGLLGLLEEMRDERLSRIITRMQ
AQARGQLMRIEFKKIVERRDALLVI

Purity > 90% as determined by SDS-PAGE.

Notes Repeated freezing and thawing is not recommended. Store working aliquots at 4 centigrade for up to one week.

Storage The shelf life is related to many factors, storage state, buffer ingredients, storage temperature and the stability of the protein itself. Generally, the shelf life of liquid form is 6 months at -20 centigrade/-80 centigrade. The shelf life of lyophilized form is 12 months at -20 centigrade/-80 centigrade.

Concentration A hardcopy of COA with reconstitution instruction is sent along with the products.

GENE INFORMATION

Gene Name MYH6 myosin heavy chain 6 [Homo sapiens (human)]

Official Symbol MYH6

Synonyms ASD3; MYHC; SSS3; CMH14; MYHCA; CMD1EE; alpha-MHC;

Gene ID 4624

mRNA Refseq NM_002471

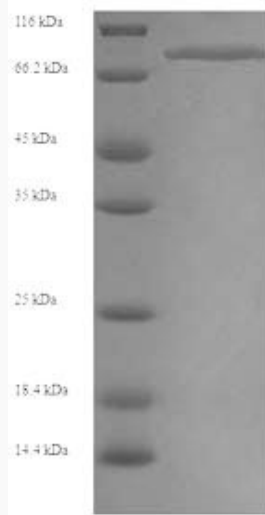
Protein Refseq NP_002462

UniProt ID P13533

 Tel: 1-631-559-9269 1-516-512-3133

 Email: info@creative-biomart.com  Fax: 1-631-938-8127

 45-1 Ramsey Road, Shirley, NY 11967, USA



(Tris-Glycine gel) Discontinuous SDS-PAGE (reduced) with 5% enrichment gel and 15% separation gel.

 Tel: 1-631-559-9269 1-516-512-3133

 Email: info@creative-biomart.com  Fax: 1-631-938-8127

 45-1 Ramsey Road, Shirley, NY 11967, USA