

# Recombinant Human MYH6 Protein, Myc/DDK-tagged, C13 and N15-labeled

Cat. No. MYH6-1799H Lot. No. (See product label)

## SPECIFICATION

<b>Product Overview</b>	MYH6 MS Standard C13 and N15-labeled recombinant protein (NP_002462) with a C-terminal MYC/DDK tag, was expressed in HEK293 cells.
<b>Species</b>	Human
<b>Source</b>	HEK293
<b>Description</b>	Cardiac muscle myosin is a hexamer consisting of two heavy chain subunits, two light chain subunits, and two regulatory subunits. This gene encodes the alpha heavy chain subunit of cardiac myosin. The gene is located approximately 4kb downstream of the gene encoding the beta heavy chain subunit of cardiac myosin. Mutations in this gene cause familial hypertrophic cardiomyopathy and atrial septal defect 3.
<b>Molecular Mass</b>	224.2 kDa
<b>AA Sequence</b>	<p>MTDAQMADFGAAAQYLRKSEKERLEAQRPFDIRTECFVPDDKEEFVKAKILSREG            GKVIAETENGKTVTVKEDQVLQQNPPKFDKIEDMAMLTFLHEPAVLFLNKERYAAW            MIYTYSGFLFCVTVNPKWLPVYNAEVVAAAYRGKKRSEAPPHIFSISDNAYQYMLTDR            ENQSILITGESGAGKTVNTRKVIQYFASIAAIGDRGKKDNANANKGTLEDQIIQANPAL            EAFGNAKTVRNDNSSRFGKFIHFGATGKLASADIETYLLEKSRVIFQLKAERNYHIF            YQILSNKKPELLDMLLVNTPYDYAFVSQGEVSVASIDDSEELMATDSAFDVLGFTS            EEKAGVYKLTGAIMHYGNMKFKQKQREEQAEPDGTEDADKSAYLMGLNSADLLKG            LCHPRVKVGNEYVTKGQSVQQVYYSIGALAKAVYEKMFNWMVTRINATLETQPRQ</p>

Tel: 1-631-559-9269 1-516-512-3133

Email: [info@creative-biomart.com](mailto:info@creative-biomart.com) Fax: 1-631-938-8127

45-1 Ramsey Road, Shirley, NY 11967, USA

YFIGVLDIAGFEIFDFNSFEQLCINFTNEKLQQFFNHHMFVLEQEEYKKEGIEWTFIDF  
GMDLQACIDLIEKPMGIMSILEEECMFPKATDMTFKAKLYDNHLGKSNNFQKPRNIK  
GKQEAHFSLIHYAGTVDYNILGWLEKNKDPLNETVVALYQKSSLKLMATLFSSYATA  
DTGDSGKSKGGKKKGSSFQTVSALHRENLNKLMTNLRTTHPHFVRCIIPNERKAPG  
VMDNPLVMHQLRCNGVLEGIRICRKGFPNRILYGDFRQRYRILNPVAIPEGQFIDSRK  
GTEKLLSSLDIDHNQYKFGHTKVFFKAGLLGLLEEMRDERLSRIITRMQAQARGQLM  
RIEFKKIVERRDALLVIQWNIRAFMGVKNWPWMKLYFKIKPLLKSAETEKEMATMKEE  
FGRIKETLEKSEARRKELEEKMVSLLEQEKNDLQLQVQAEQDNLNDAEERCDQLIKNK  
IQLEAKVKEMNERLEDEEEMNAELTAKKRKLEDECSELKKDIDDLELTLAKVEKEKHA  
TENKVNKLTEEMAGLDEIIAKLTKEKKALQEAHQALDDLQVEEDKVNSLSKSKVKLE  
QQVDDLEGSLEQEKKVRMDLERAKRKLEGLDLKLTQESIMDLENDKLQLEEKLKKKE  
FDINQQNSKIEDEQVLALQLQKCLKENQARIEELEELEAERTARAKVEKLRSDLSRE  
LEEISERLEEAGGATSVQIEMNKKREAEFQKMRRDLEEATLQHEATAAALRKKHADS  
VAELGEQIDNLQRVKQKLEKEKSEFKLEDDVTSNMEQIIKAKANLEKVSRTLEDQAN  
EYRVKLEEAQRSLNDFTTQRAKLQTENGELARQLEEKEALISQLTRGKLSYTQQME  
DLKRQLEEEGKAKNALAHALQSARHDCDLLREQYEEETEAKAELQRVLSKANSEVA  
QWRTKYETDAIQRTEEEAAKKLAQRLQDAEEAVEAVNAKCSSLEKTKHRLQNEIE  
DLMVDVERSNAAAAALDKKQRNFDKILAEWKQKYEESQSELESSQKEARSLSTELF  
KLKNAYEESLEHLETFKRENKNLQEEISDLTEQLGEGGKNVHELEKVRKQLEVEKLE  
LQSALEEAASLEHEEGKILRAQLEFNQIKAEIERKLAEKDEEMEQAKRNHQRVVDS  
LQTSLDAETRSRNEVLRVKKKMEGDLNEMEIQLSHANRMAAEAQKQVKSLSLQSLKD  
TQIQLDDAVRANDDLKENIAIVERRNLLQAELEELRAVVEQTERSRLAEQELIETS  
ERVQLLHSQNTSLINQKKKMESDLTQLQSEVEEAVQEQRNAEEKAKKAITDAAMMA  
EELKKEQDTS AHLERMKKNMEQTIKDLQHLRDEAEQIALKGGKKQLQKLEARVRELE  
GELEAEQKRNAESVKGMRKSERRIKELTYQTEEDKKNLLRLQDLVDKLQLKVKAYK  
RQAEAAEQANTNLSKFRKVQHELDEAEERADIAESQVNKLRAKSRDIGAKQKMH  
EETRTRPLEQKLISEEDLAANDILDYKDDDDKV

**Purity**

&gt; 80% as determined by SDS-PAGE and Coomassie blue staining

 Tel: 1-631-559-9269 1-516-512-3133 Email: [info@creative-biomart.com](mailto:info@creative-biomart.com)  Fax: 1-631-938-8127 45-1 Ramsey Road, Shirley, NY 11967, USA

<b>Stability</b>	Stable for 3 months from receipt of products under proper storage and handling conditions.
<b>Storage</b>	Store at -80 centigrade. Avoid repeated freeze-thaw cycles.
<b>Concentration</b>	50 µg/mL as determined by BCA
<b>Storage Buffer</b>	100 mM glycine, 25 mM Tris-HCl, pH 7.3.

## GENE INFORMATION

<b>Gene Name</b>	MYH6 myosin heavy chain 6 [ Homo sapiens (human) ]
<b>Official Symbol</b>	MYH6
<b>Synonyms</b>	MYH6; myosin heavy chain 6; ASD3; MYHC; SSS3; CMH14; MYHCA; CMD1EE; alpha-MHC; myosin-6; myHC-alpha; myosin, heavy polypeptide 6, cardiac muscle, alpha (cardiomyopathy, hypertrophic 1)
<b>Gene ID</b>	4624
<b>mRNA Refseq</b>	NM_002471
<b>Protein Refseq</b>	NP_002462
<b>MIM</b>	160710
<b>UniProt ID</b>	P13533

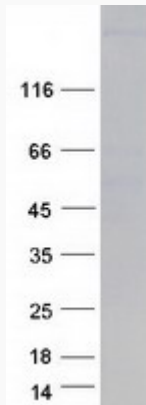
 Tel: 1-631-559-9269 1-516-512-3133

 Email: [info@creative-biomart.com](mailto:info@creative-biomart.com)  Fax: 1-631-938-8127

 45-1 Ramsey Road, Shirley, NY 11967, USA



**SDS-PAGE**



☎ Tel: 1-631-559-9269 1-516-512-3133

☎ Email: [info@creative-biomart.com](mailto:info@creative-biomart.com) ☎ Fax: 1-631-938-8127

☎ 45-1 Ramsey Road, Shirley, NY 11967, USA