

Recombinant Full Length Human MYH6 Protein, C-Flag-tagged

Cat. No. MYH6-451HFL **Lot. No.** (See product label)

SPECIFICATION

Product Overview	Recombinant Full Length Human MYH6 Protein, fused to Flag-tag at C-terminus, was expressed in Mammalian cells.
Species	Human
Source	Mammalian Cells
Description	Cardiac muscle myosin is a hexamer consisting of two heavy chain subunits, two light chain subunits, and two regulatory subunits. This gene encodes the alpha heavy chain subunit of cardiac myosin. The gene is located approximately 4kb downstream of the gene encoding the beta heavy chain subunit of cardiac myosin. Mutations in this gene cause familial hypertrophic cardiomyopathy and atrial septal defect 3.
Form	25 mM Tris HCl, pH 7.3, 100 mM glycine, 10% glycerol.
Molecular Mass	223.6 kDa
AA Sequence	<p>MTDAQMADFGAAAQYLRKSEKERLEAQTRPFDIRTECFVPDDKEEFVKAKILSREG GKVIAETENKTVT VKEDQVLQQNPPKFDKIEDMAMLTFLHEPAVLFNLKERYAAW MIYTYSGLFCVTVNPYKWLVPVYNAEVVA AYRGKKRSEAPPHIFSISDNAYQYMLTDR ENQSILITGESGAGKTVNTRVIQYFASIAAIGDRGKKDNA NANKGTLEDQIIQANPAL EAFGNAKTVRNDNSSRFGKFIHIFGATGKLASADIETYLLEKSRVIFQLKA ERNYHIF YQILSNKKPELLDMLLVTNPNPYDYAFVVSQGEVSVASIDDSEELMATDSAFDVLGFTS EEKAGV YKLTGAIMHYGNMKFKQKQREEQAEPDGTEDADKSAYLMGLNSADLLKG LCHPRVKVGNEYVTKGQSVQQ VYYSIGALAKAVYEKMFNWMVTRINATLETQQR</p>

 Tel: 1-631-559-9269 1-516-512-3133

 Email: info@creative-biomart.com  Fax: 1-631-938-8127

 45-1 Ramsey Road, Shirley, NY 11967, USA

QYFIGVLDIAGFEIFDFNSFEQLCINFTNEKLQQFF NHHMFVLEQEEYKKEGIEWTFI
DFGMDLQACIDLIEKPMGIMSILEEECMFPKATDMTFKAKLYDNHLGK SNNFQKPRN
IKGKQEAHFSLIHYAGTVDYNILGWLEKNKDPLNETVVALYQKSSLKLMATLFSSYAT
ADT GDSGKSKGGKKKGSSFQTVSALHRENLNKLMTNLRTTHPHFVRCIIPNERKAP
GVMDNPLVMHQLRCNGV LEGIRICRKGFPNRILYGDFRQRYRILNPVAIPEGQFIDS
RKGTEKLLSSLDIDHNQYKFGHTKVFFKAG LGLLEEMRDERLSRIITRMQAQARGQ
LMRIEFKKIVERRDALLVIQWNIRAFMGVKNWPWMKLYFKIKP LLKSAETEKEMATM
KEEFGRIKETLEKSEARRKELEEKMVSLLEQKNDLQLQVQAEQDNLNDAEERCDQL
IKNKIQLEAKVKEMNERLEDEEEMNAELTAKKRKLEDECSELKKDIDDLELTLAKVEK
EKHATENKVKNL TEEMAGLDEIIAKLTKEKKALQEAHQALDDLQVEEDKVNLSKSKS
KVKLEQQVDDLEGSLEQEKKVRMDL ERAKRKLEGDLKLTQESIMDLENDKLQLEEK
LKKKEFDINQQNSKIEDEQVLALQLQKKLKENQARIEEL EEELEAERTARAKVEKLRS
DLSRELEEISERLEEAGGATSVQIEMNKKREAEFQKMRRDLEEATLQHEAT AAALR
KKHADSVAELGEQIDNLQRVKQKLEKEKSEFKLELDDVTSNMEQIIKAKANLEKVSRT
LEDQANE YRVKLEEAQRSLNDFTTQRAKLQTENGELARQLEEKEALISQLTRGKLS
YTQQMEDLKRQLEEEGKAKNA LAHALQSARHDCDLLREQYEEETEAKAELQRVLS
KANSEVAQWRKYETDAIQRTEELEEAKKKLAQRLQ DAEAEVAVNAKCSSLEKTK
HRLQNEIEDLMVDVERSNAAAAALDKKQRNFDKILAEWKQKYEESQSELE SSQKEA
RSLSTELFKLNAYEESLEHLETFKRENKNLQEEISDLTEQLGEGGKNVHELEKVRK
QLEVEKL ELQSALEEAASLEHEEGKILRAQLEFNQIKAEIERKLAEKDEEMEQAKR
NHQRVVDSLQTSLDAETR SR NEVLRVKKKMEGDLNEMEIQLSHANRMAAEAQKQV
KSLQSLKDTQIQLDDAVRANDDLKENIAIVERRN NLLQAELEELRAVVEQTERSRLK
AEQELIETSERVQLLHSQNTSLINQKKKMESDLTQLQSEVEEAVQEC RNAEEKAKK
AITDAAMMAEELKKEQDTS AHLERMKKNMEQTIKDLQHLRDEAEQIALKGGKKQLQ
KLEAR VRELEGELEAEQKRNAESVKGMRKSERRIKELTYQTEEDKKNLLRLQLDLDV
KLQLKVKAYKRQAEAEAEQ
ANTNLSKFRKVQHELDEAEERADIAESQVNKLRAKSRDIGAKQKMHDEETRTRPLE
QKLISEEDLAANDILDYKDDDDKV

Purity

> 80% as determined by SDS-PAGE and Coomassie blue staining.

 Tel: 1-631-559-9269 1-516-512-3133 Email: info@creative-biomart.com  Fax: 1-631-938-8127 45-1 Ramsey Road, Shirley, NY 11967, USA

Stability	Stable for 12 months from the date of receipt of the product under proper storage and handling conditions. Avoid repeated freeze-thaw cycles.
Storage	Store at -80 centigrade.
Concentration	>50 ug/mL as determined by microplate BCA method.
Preparation	Recombinant protein was captured through anti-DDK affinity column followed by conventional chromatography steps.
Protein Pathways	Cardiac muscle contraction, Dilated cardiomyopathy, Hypertrophic cardiomyopathy (HCM), Tight junction, Viral myocarditis
Full Length	Full L.

GENE INFORMATION

Gene Name	MYH6 myosin heavy chain 6 [Homo sapiens (human)]
Official Symbol	MYH6
Synonyms	ASD3; MYHC; SSS3; CMH14; MYHCA; CMD1EE; alpha-MHC
Gene ID	4624
mRNA Refseq	NM_002471.4
Protein Refseq	NP_002462.2
MIM	160710

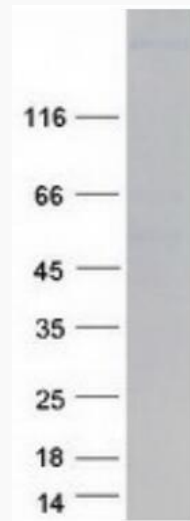
 Tel: 1-631-559-9269 1-516-512-3133

 Email: info@creative-biomart.com  Fax: 1-631-938-8127

 45-1 Ramsey Road, Shirley, NY 11967, USA

UniProt ID

P13533



Coomassie blue staining of purified MYH6 protein.

 Tel: 1-631-559-9269 1-516-512-3133

 Email: info@creative-biomart.com  Fax: 1-631-938-8127

 45-1 Ramsey Road, Shirley, NY 11967, USA