

Recombinant Human MYH6 protein, His-tagged

Cat. No. MYH6-5564H **Lot. No.** (See product label)

SPECIFICATION

Product Overview	Recombinant Human MYH6 protein(P13533)(160-816aa), fused with C-terminal His tag, was expressed in Insect cells.
Species	Human
Source	Insect cells
ProteinLength	160-816aa
Tag	C-His
Form	If the delivery form is liquid, the default storage buffer is Tris/PBS-based buffer, 5%-50% glycerol. If the delivery form is lyophilized powder, the buffer before lyophilization is Tris/PBS-based buffer, 6% Trehalose, pH 8.0.
Molecular Mass	80.4 kDa
Purity	Greater than 90% as determined by SDS-PAGE. Greater than 90% as determined by SEC-HPLC.
Storage	Store at -20°C/-80°C upon receipt, aliquoting is necessary for mutiple use. Avoid repeated freeze-thaw cycles.
Reconstitution	We recommend that this vial be briefly centrifuged prior to opening to bring the contents to the bottom. Please reconstitute protein in deionized sterile water to a

 Tel: 1-631-559-9269 1-516-512-3133

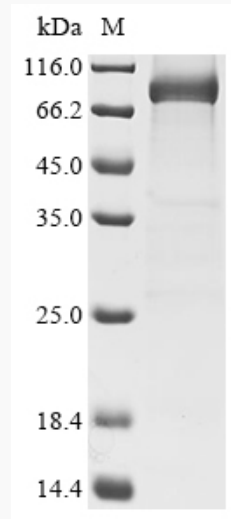
 Email: info@creative-biomart.com  Fax: 1-631-938-8127

 45-1 Ramsey Road, Shirley, NY 11967, USA

concentration of 0.1-1.0 mg/mL. We recommend to add 5-50% of glycerol (final concentration) and aliquot for long-term storage at -20°C/-80°C.

AA Sequence

NAYQYMLTDRENQSILITGESGAGKTVNTRKRVIQYFASIAAIGDRGKKDNANANKGTL
 EDQIIQANPALEAFGNAKTVRNDNSSRFGKFIRIHFGATGKGLASADIETYLLEKSRVIF
 QLKAERNYHIFYQILSNKKPELLDMLLVTTNPNPYDYAFVSQGEVSVASIDDSEELMATD
 SAFDVLGFTSEEKAGVYKLTGAIMHYGNMFKKQKQREEQAEPDGTEDADKSAYLM
 GLNSADLLKGLCHPRVKVGN EYVTKGQSVQQVYYSIGALAKAVYEKMFNWMVTRIN
 ATLETQPRQYFIGVLDIAGFEIFDFNSFEQLCINFTNEKLQQFFNHMHFVLEQEEYK
 KEGIEWTFIDFGMDLQACIDLIEKPMGIMSILEEECMFPKATDMTFKAKLYDNHLGKS
 NNFQKPRNIKGGKQEAHFSLIHYAGTVDYNILGWLEKNKDPLNETVVALYQKSSLKLM
 ATLFSSYATADTGDGSGKSKGGKGGSSFQTVSALHRENLNKLMTNLRTTHPHFVRCI
 IPNERKAPGVMDNPLVMHQLRCNGVLEGIRICRKGFPNRILYGDFRQRYRILNPVAIP
 EGQFIDSRKGTEKLLSSLDIDHNQYKFGHTKVFFKAGLLGLLEEMRDERLSRIITRMQ
 AQARGQLMRIEFKKIVERRDALLVI

SDS-PAGE


 Tel: 1-631-559-9269 1-516-512-3133

 Email: info@creative-biomart.com  Fax: 1-631-938-8127

 45-1 Ramsey Road, Shirley, NY 11967, USA