

Recombinant Human MYH7 protein, His-tagged

Cat. No. MYH7-8020H Lot. No. (See product label)

SPECIFICATION

Product Overview	Recombinant Human MYH7 aa. (Arg1268~Leu1516 (Accession # P12883)) fused with N-terminal His tag was produced in E. coli cells.
Species	Human
Source	E.coli
ProteinLength	Arg1268~Leu1516
Description	Muscle myosin is a hexameric protein containing 2 heavy chain subunits, 2 alkali light chain subunits, and 2 regulatory light chain subunits. This gene encodes the beta (or slow) heavy chain subunit of cardiac myosin. It is expressed predominantly in normal human ventricle. It is also expressed in skeletal muscle tissues rich in slow-twitch type I muscle fibers. Changes in the relative abundance of this protein and the alpha (or fast) heavy subunit of cardiac myosin correlate with the contractile velocity of cardiac muscle. Its expression is also altered during thyroid hormone depletion and hemodynamic overloading. Mutations in this gene are associated with familial hypertrophic cardiomyopathy, myosin storage myopathy, dilated cardiomyopathy, and Laing early-onset distal myopathy.
Form	Freeze-dried powder
Molecular Mass	Predicted Molecular Mass: 30.5kDa
Endotoxin	<1.0EU per 1ug (determined by the LAL method)

 Tel: 1-631-559-9269 1-516-512-3133

 Email: info@creative-biomart.com  Fax: 1-631-938-8127

 45-1 Ramsey Road, Shirley, NY 11967, USA

Purity	>95%
Characteristic	The isoelectric point is 5.3.
Applications	SDS-PAGE; WB; ELISA; IP
Stability	The thermal stability is described by the loss rate of the target protein. The loss rate was determined by accelerated thermal degradation test, that is, incubate the protein at 37°C for 48h, and no obvious degradation and precipitation were observed. (Referring from China Biological Products Standard, which was calculated by the Arrhenius equation.) The loss of this protein is less than 5% within the expiration date under appropriate storage condition.
Storage	Avoid repeated freeze/thaw cycles. Store at 2-8°C for one month. Aliquot and store at -80°C for 12 months.
Storage Buffer	Supplied as lyophilized form in 20mM Tris, 500mM NaCl, pH8.0, containing 1mM EDTA, 1mM DTT, 0.01% sarcosyl, 5% trehalose, and preservative.
Reconstitution	Reconstitute in sterile ddH ₂ O.

GENE INFORMATION

Gene Name	MYH7 myosin heavy chain 7 [Homo sapiens (human)]
Official Symbol	MYH7
Synonyms	MYH7; myosin heavy chain 7; CMH1; MPD1; SPMD; SPMM; CMD1S; MYHCB; myosin-7; cardiac muscle myosin heavy chain 7 beta; myHC-beta; myhc-slow; myopathy, distal 1; myosin 7; myosin heavy chain beta-subunit; myosin heavy chain slow isoform; myosin heavy chain, cardiac muscle beta isoform; myosin, heavy chain

 Tel: 1-631-559-9269 1-516-512-3133

 Email: info@creative-biomart.com  Fax: 1-631-938-8127

 45-1 Ramsey Road, Shirley, NY 11967, USA

7, cardiac muscle, beta; myosin, heavy polypeptide 7, cardiac muscle, beta;
rhabdomyosarcoma antigen MU-RMS-40.7A

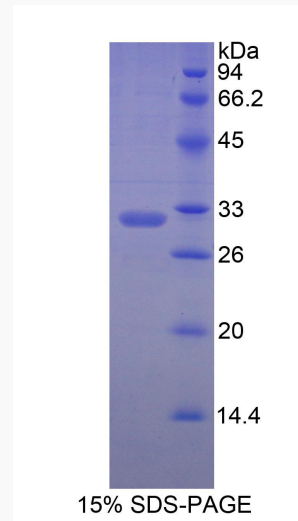
Gene ID 4625

mRNA Refseq NM_000257.3

Protein Refseq NP_000248.2

UniProt ID P12883

SDS-PAGE



 Tel: 1-631-559-9269 1-516-512-3133

 Email: info@creative-biomart.com  Fax: 1-631-938-8127

 45-1 Ramsey Road, Shirley, NY 11967, USA