

## Recombinant Human MYL1 protein, His-tagged

**Cat. No.** MYL1-1507H    **Lot. No.** (See product label)

### SPECIFICATION

<b>Product Overview</b>	Recombinant Human MYL1 aa. (Phe3~Ala142) fused with N-terminal His tag was produced in E. coli cells.
<b>Species</b>	Human
<b>Source</b>	E.coli
<b>ProteinLength</b>	Phe3~Ala142
<b>Description</b>	Myosin is a hexameric ATPase cellular motor protein. It is composed of two heavy chains, two nonphosphorylatable alkali light chains, and two phosphorylatable regulatory light chains. This gene encodes a myosin alkali light chain expressed in fast skeletal muscle. Two transcript variants have been identified for this gene.
<b>Form</b>	Freeze-dried powder
<b>Molecular Mass</b>	17kDa as determined by SDS-PAGE reducing conditions.
<b>Endotoxin</b>	<1.0EU per 1g (determined by the LAL method).
<b>Purity</b>	>95%
<b>Characteristic</b>	The isoelectric point is 4.9.
<b>Applications</b>	SDS-PAGE; WB; ELISA; IP; CoIP; Purification; Amine Reactive

 Tel: 1-631-559-9269    1-516-512-3133

 Email: [info@creative-biomart.com](mailto:info@creative-biomart.com)     Fax: 1-631-938-8127

 45-1 Ramsey Road, Shirley, NY 11967, USA

	Labeling.
<b>Stability</b>	The thermal stability is described by the loss rate. The loss rate was determined by accelerated thermal degradation test, that is, incubate the protein at 37°C for 48h, and no obvious degradation and precipitation were observed. The loss rate is less than 5% within the expiration date under appropriate storage condition.
<b>Storage</b>	Avoid repeated freeze/thaw cycles. Store at 2-8°C for one month. Aliquot and store at -80°C for 12 months.
<b>Concentration</b>	200g/mL
<b>Storage buffer</b>	20mM Tris, 150mM NaCl, pH8.0, containing 1mM EDTA, 1mM DTT, 0.01% sarcosyl, 5%Trehalose and Proclin300.
<b>Reconstitution</b>	Reconstitute in 20mM Tris, 150mM NaCl (pH8.0) to a concentration of 0.1-1.0mg/mL. Do not vortex.

## GENE INFORMATION

<b>Gene Name</b>	MYL1 myosin light chain 1 [ Homo sapiens (human) ]
<b>Official Symbol</b>	MYL1
<b>Synonyms</b>	MLC1F; MLC3F; A1 catalytic; A2 catalytic; MLC1/MLC3; MLC1F/MLC3F; myosin light chain A1/A2; myosin light chain alkali 1/2; myosin, light chain 1, alkali; skeletal, fast; myosin, light polypeptide 1, alkali; skeletal, fast; myosin light chain 1/3, skeletal muscle isoform
<b>Gene ID</b>	4632

 Tel: 1-631-559-9269 1-516-512-3133

 Email: [info@creative-biomart.com](mailto:info@creative-biomart.com)  Fax: 1-631-938-8127

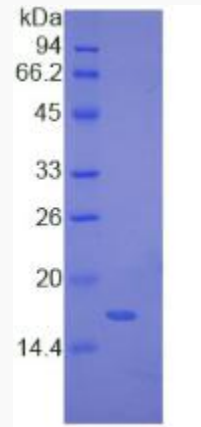
 45-1 Ramsey Road, Shirley, NY 11967, USA


mRNA Refseq [NM\\_079420.2](#)

Protein Refseq [NP\\_524144.1](#)


UniProt ID [P05976](#)

**SDS-PAGE**



 Tel: 1-631-559-9269 1-516-512-3133

 Email: [info@creative-biomart.com](mailto:info@creative-biomart.com)  Fax: 1-631-938-8127

 45-1 Ramsey Road, Shirley, NY 11967, USA