

Recombinant Human Myosin, Light Chain 1, His-tagged

Cat. No. MYL1-4457H **Lot. No.** (See product label)

SPECIFICATION

Product Overview	Recombinant human MYL1 protein with a His-tag was expressed in E. coli
Species	Human
Source	E.coli
Description	Myosin is a hexameric ATPase cellular motor protein. It is composed of two heavy chains, two nonphosphorylatable alkali light chains, and two phosphorylatable regulatory light chains. This gene encodes a myosin alkali light chain expressed in fast skeletal muscle. Two transcript variants have been identified for this gene.
Molecular Mass	The protein has a calculated MW of 23.3 kDa.
AA Sequence	MGSSHHHHHSSGLVPRGSHMAPKKDVKKPVAAAAAAPAPAPAPAPAPAKPKE EKIDLSAIKIEFSKEQQDEFKEAFLLFDRTGDSKITLSQVGDVLRALGTNPTNAEVRKV LGNPSNEELNAKKIEFEQFLPMMQAISNNKDQATYEDFVEGLRVFDKEGNGTVMGA ELRHVLATLGEKMKEEEVEALMAGQEDSNGCINYEAFVKHIMSI
Purity	>90% by SDS-PAGE
Storage	Store it under sterile conditions at -20 to -80 centigrade. It is recommended that the protein be aliquoted for optimal storage. Avoid repeated freeze-thaw cycles.
Storage Buffer	Lyophilized from 10mM Tris -HCl, 1mM EDTA PH 7.5, 5% trehalose, 5% manitol

 Tel: 1-631-559-9269 1-516-512-3133

 Email: info@creative-biomart.com  Fax: 1-631-938-8127

 45-1 Ramsey Road, Shirley, NY 11967, USA

GENE INFORMATION

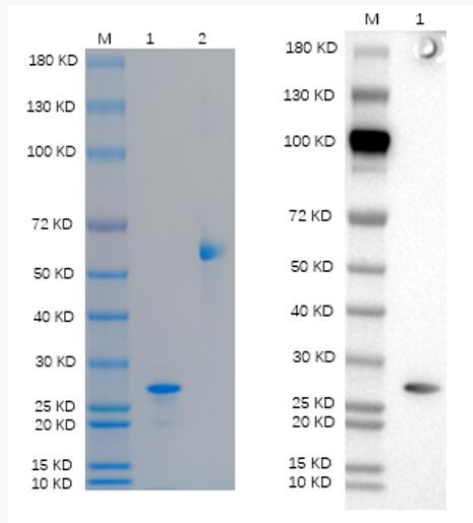
Gene Name	MYL1 myosin, light chain 1, alkali; skeletal, fast [Homo sapiens (human)]
Official Symbol	MYL1
Synonyms	MYL1; myosin, light chain 1, alkali; skeletal, fast; myosin, light polypeptide 1, alkali; skeletal, fast; myosin light chain 1/3, skeletal muscle isoform; MLC1/MLC3; MLC1F/MLC3F; A1 catalytic; A2 catalytic; myosin light chain A1/A2; myosin light chain alkali 1/2; myosin, light polypeptide 1, alkali; skeletal, fast; MLC1F; MLC3F;
Gene ID	4632
mRNA Refseq	NM_079420
Protein Refseq	NP_524144
MIM	160780
UniProt ID	P05976

 Tel: 1-631-559-9269 1-516-512-3133

 Email: info@creative-biomart.com  Fax: 1-631-938-8127

 45-1 Ramsey Road, Shirley, NY 11967, USA

SDS-PAGE:



Reducing 12% SDS-PAGE analysis profile of purified MYL1

1. MYL1
2. BSA

 Tel: 1-631-559-9269 1-516-512-3133

 Email: info@creative-biomart.com  Fax: 1-631-938-8127

 45-1 Ramsey Road, Shirley, NY 11967, USA