

## Recombinant Human MYL10 Protein, GST-tagged

Cat. No. MYL10-5818H Lot. No. (See product label)

### SPECIFICATION

<b>Product Overview</b>	Human MYLC2PL full-length ORF ( NP_612412.2, 1 a.a. - 226 a.a.) recombinant protein with GST-tag at N-terminal.
<b>Species</b>	Human
<b>Source</b>	Wheat Germ
<b>Description</b>	MYL10 (Myosin Light Chain 10) is a Protein Coding gene. Among its related pathways are Focal Adhesion and Blood-Brain Barrier and Immune Cell Transmigration: VCAM-1/CD106 Signaling Pathways. GO annotations related to this gene include calcium ion binding. An important paralog of this gene is MYL2.
<b>Molecular Mass</b>	51.7 kDa
<b>AA Sequence</b>	MLLRLVSNSWPQVILPPRPPKVLGLQAPRRARKRAEGTASSNVFSMFDQSQIQEFK ESLALSPRLERNGMISAHCNLCLTGSSNSPASASQAFTIMDQNRDGFIDKEDLRDTF AALGRINVKNEELEAMVKEAPGPINFVFLTMFGEKLGKTDPEETILHAFKVFDTGK GFVKADVIKEKLMTQADRFSEEEVKQMFAAFPDPVCGNLDYRNLCYVITHGEEKD
<b>Applications</b>	Enzyme-linked Immunoabsorbent Assay Western Blot (Recombinant protein) Antibody Production Protein Array
<b>Notes</b>	Best use within three months from the date of receipt of this protein.

 Tel: 1-631-559-9269 1-516-512-3133

 Email: [info@creative-biomart.com](mailto:info@creative-biomart.com)  Fax: 1-631-938-8127

 45-1 Ramsey Road, Shirley, NY 11967, USA

**Storage** Store at -80 centigrade. Aliquot to avoid repeated freezing and thawing.

**Storage Buffer** 50 mM Tris-HCl, 10 mM reduced Glutathione, pH=8.0 in the elution buffer.

## GENE INFORMATION

**Gene Name** MYL10 myosin light chain 10 [ Homo sapiens (human) ]

**Official Symbol** MYL10

**Synonyms**

MYL10; myosin light chain 10; PLRLC; MYLC2PL; myosin regulatory light chain 10; myosin light chain 2, lymphocyte-specific; myosin light chain 2, precursor lymphocyte-specific; myosin, light chain 10, regulatory; precursor lymphocyte-specific regulatory light chain

**Gene ID** 93408

**mRNA Refseq** NM\_138403

**Protein Refseq** NP\_612412

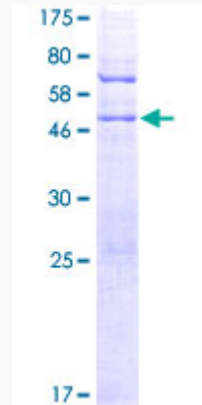
**MIM** 617177

**UniProt ID** Q9BUA6

 Tel: 1-631-559-9269 1-516-512-3133

 Email: [info@creative-biomart.com](mailto:info@creative-biomart.com)  Fax: 1-631-938-8127

 45-1 Ramsey Road, Shirley, NY 11967, USA



Quality Control

Testing:

12.5% SDS-PAGE Stained with Coomassie Blue.

 Tel: 1-631-559-9269 1-516-512-3133

 Email: [info@creative-biomart.com](mailto:info@creative-biomart.com)  Fax: 1-631-938-8127

 45-1 Ramsey Road, Shirley, NY 11967, USA