

# Recombinant Human MYL12B Protein (Lys5-Asp172), N-His tagged

Cat. No. MYL12B-3893H Lot. No. (See product label)

## SPECIFICATION

<b>Product Overview</b>	Recombinant human MYL12B (Lys5-Asp172) fused with the N-His tag was expressed in E. coli.
<b>Species</b>	Human
<b>Source</b>	E.coli
<b>ProteinLength</b>	Lys5-Asp172
<b>Form</b>	Lyophilized powder/frozen liquid
<b>Molecular Mass</b>	21.66 kDa
<b>Purity</b>	>90% as determined by SDS-PAGE.
<b>Notes</b>	For research use only.
<b>Storage</b>	Use a manual defrost freezer and avoid repeated freeze thaw cycles. Store at 2 to 8 centigrade for one week. Store at -20 to -80 centigrade for twelve months from the date of receipt.
<b>Storage Buffer</b>	0.01M PBS, pH 7.4, 0.02% NLS
<b>Reconstitution</b>	Reconstitute in sterile water for a stock solution.

 Tel: 1-631-559-9269 1-516-512-3133

 Email: [info@creative-biomart.com](mailto:info@creative-biomart.com)  Fax: 1-631-938-8127

 45-1 Ramsey Road, Shirley, NY 11967, USA

**Shipping** They are shipped out with dry ice/blue ice unless customers require otherwise.

## GENE INFORMATION

**Gene Name** MYL12B myosin, light chain 12B, regulatory [ Homo sapiens (human) ]

**Official Symbol** MYL12B

**Synonyms** MYL12B; myosin, light chain 12B, regulatory; myosin regulatory light chain 12B; MRLC2; myosin regulatory light chain 2; MLC-2; MLC20; MLC-2A; SHUJUN-1; myosin regulatory light chain MRLC2; myosin regulatory light chain 20 kDa; myosin regulatory light chain 2-B, smooth muscle isoform; MLC-B;

**Gene ID** 103910

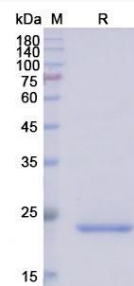
**mRNA Refseq** NM\_001144944

**Protein Refseq** NP\_001138416

**MIM** 609211

**UniProt ID** O14950

## SDS-PAGE



 Tel: 1-631-559-9269 1-516-512-3133

 Email: [info@creative-biomart.com](mailto:info@creative-biomart.com)  Fax: 1-631-938-8127

 45-1 Ramsey Road, Shirley, NY 11967, USA