

Recombinant Human MYL12B protein, His-GST-tagged

Cat. No. MYL12B-5763H Lot. No. (See product label)

SPECIFICATION

Product Overview	Recombinant Human MYL12B protein(O14950)(1-172aa), fused with N-terminal His and GST tag, was expressed in E.coli.
Species	Human
Source	E.coli
ProteinLength	1-172aa
Form	If the delivery form is liquid, the default storage buffer is Tris/PBS-based buffer, 5%-50% glycerol. If the delivery form is lyophilized powder, the buffer before lyophilization is Tris/PBS-based buffer, 6% Trehalose, pH 8.0.
Molecular Mass	51.3 kDa
Purity	Greater than 85% as determined by SDS-PAGE.
Storage	Store at -20°C/-80°C upon receipt, aliquoting is necessary for mutiple use. Avoid repeated freeze-thaw cycles.
Reconstitution	We recommend that this vial be briefly centrifuged prior to opening to bring the contents to the bottom. Please reconstitute protein in deionized sterile water to a concentration of 0.1-1.0 mg/mL. We recommend to add 5-50% of glycerol (final concentration) and aliquot for long-term storage at -20°C/-80°C.

 Tel: 1-631-559-9269 1-516-512-3133

 Email: info@creative-biomart.com  Fax: 1-631-938-8127

 45-1 Ramsey Road, Shirley, NY 11967, USA

AA Sequence

MSSKKAKTKTTKKRPQRATSNVFMFDQSQIQEFKEAFNMIDQNRDGFIDKEDLHD
 MLASLGKNPTDAYLDAMMNEAPGPINFTMFLTMFGEKLNKGTDPEDVIRNAFACFDE
 EATGTIQEDYLRELLTTMGDRFTDEEVDELYREAPIDKKGNFNIEFTRILKHGAKDK
 DD

GENE INFORMATION
Gene Name

[MYL12B myosin, light chain 12B, regulatory \[Homo sapiens \]](#)

Official Symbol

[MYL12B](#)

Synonyms

MYL12B; myosin, light chain 12B, regulatory; myosin regulatory light chain 12B;
 MRLC2; myosin regulatory light chain 2; MLC-2; MLC20; MLC-2A; SHUJUN-1;
 myosin regulatory light chain MRLC2; myosin regulatory light chain 20 kDa; myosin
 regulatory light chain 2-B, smooth muscle isoform; MLC-B;

Gene ID

[103910](#)

mRNA Refseq

[NM_001144944](#)

Protein Refseq

[NP_001138416](#)

MIM

[609211](#)

UniProt ID

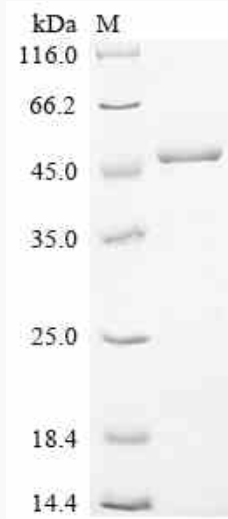
[O14950](#)

 Tel: 1-631-559-9269 1-516-512-3133

 Email: info@creative-biomart.com  Fax: 1-631-938-8127

 45-1 Ramsey Road, Shirley, NY 11967, USA

SDS-PAGE



 Tel: 1-631-559-9269 1-516-512-3133

 Email: info@creative-biomart.com  Fax: 1-631-938-8127

 45-1 Ramsey Road, Shirley, NY 11967, USA